

HA-Tag Monoclonal Antibody

Catalog Number:E-AB-20008

2 Publications



Note: Centrifuge before opening to ensure complete recovery of vial contents.

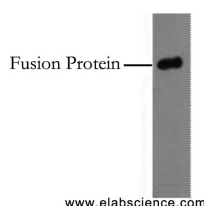
Description

Immunogen	Synthetic Peptide
Host	Mouse
Isotype	IgG
Clone	Clone:4G8
Purification	Protein A purification
Conjugation	Unconjugated
Formulation	PBS with 0.02% sodium azide and 50% glycerol pH 7.4.

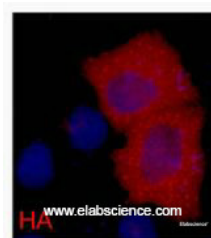
Applications Recommended Dilution

WB	1:5000-1:10000
IF	1:500-1:2000
IP	1:100-1:300

Data



Western Blot analysis of 0.5ug HA fusion protein using HA-Tag Monoclonal Antibody at dilution of 1:10000.



Immunofluorescence analysis of 293 cells transfected with a HA tag protein tissue using HA-Tag Monoclonal Antibody at dilution of 1:2000.

Preparation & Storage

Storage Store at -20°C. Avoid freeze / thaw cycles.

Background

Protein tags are protein or peptide sequences located either on the C- or N- terminal of the target protein, which facilitates one or several of the following characteristics: solubility, detection, purification, localization and expression. The HA tag is corresponds to amino acid residues YPYDVPDYA of human influenza virus hemagglutinin(HA). Many recombinant proteins have been engineered to express the HA tag, which does not appear to interfere with the bioactivity or the biodistribution of the recombinant protein. This tag facilitates the detection, isolation, and purification of the proteins. The HA tag is useful in western blotting and immunohistochemical localization of expressed fusion proteins when examined with antibodies raised specifically against the HA-tag.

For Research Use Only

A Reliable Research Partner in Life Science and Medicine

Toll-free: 1-888-852-8623

Web: www.elabscience.com

Tel: 1-832-243-6086

Email: techsupport@elabscience.com

Fax: 1-832-243-6017