

Note: Centrifuge before opening to ensure complete recovery of vial contents.

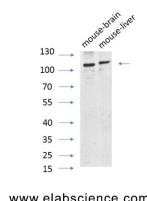
Description

| | |
|---------------------|--|
| Reactivity | Human,Mouse,Rat |
| Immunogen | Synthesized peptide derived from the Internal region of human AR. |
| Host | Rabbit |
| Isotype | IgG |
| Purification | Affinity purification |
| Conjugation | Unconjugated |
| Formulation | PBS with 0.02% sodium azide, 0.5% protective protein and 50% glycerol, pH7.4 |

Applications Recommended Dilution

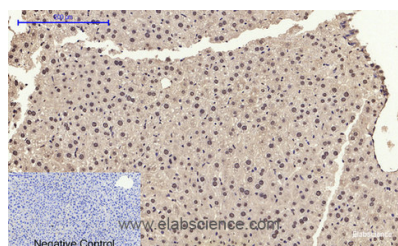
| | |
|--------------|---------------|
| WB | 1:500-2000 |
| IHC | 1:50-300 |
| IF | 1:50-1:200 |
| ELISA | 1:10000-20000 |

Data

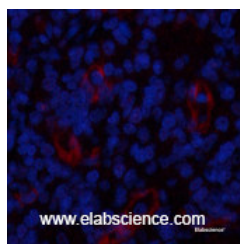


Western Blot analysis of Mouse brain, Mouse liver using AR Polyclonal Antibody at dilution of 1:1000.

Observed Mw:99kDa
Calculated Mw:99kDa



Immunohistochemistry of paraffin-embedded Mouse liver tissue using AR Polyclonal Antibody at dilution of 1:200.



Immunofluorescence analysis of Rat spleen tissue using AR Polyclonal Antibody at dilution of 1:200.

Preparation & Storage

Storage Store at -20°C. Avoid freeze / thaw cycles.

Background

Steroid hormone receptors are ligand-activated transcription factors that regulate eukaryotic gene expression and affect

For Research Use Only

A Reliable Research Partner in Life Science and Medicine

Toll-free: 1-888-852-8623

Web: www.elabscience.com

Tel: 1-832-243-6086

Email: techsupport@elabscience.com

Fax: 1-832-243-6017

AR Polyclonal Antibody

Catalog Number:E-AB-33615

2 Publications



cellular proliferation and differentiation in target tissues. Transcription factor activity is modulated by bound coactivator and corepressor proteins. Transcription activation is down-regulated by NR0B2. Activated, but not phosphorylated, by HIPK3.

For Research Use Only

A Reliable Research Partner in Life Science and Medicine

Toll-free: 1-888-852-8623

Web: www.elabscience.com

Tel: 1-832-243-6086

Email: techsupport@elabscience.com

Fax: 1-832-243-6017