

# (KO Validated) HSPB1 Polyclonal Antibody

Catalog Number:E-AB-66764



**Note:** Centrifuge before opening to ensure complete recovery of vial contents.

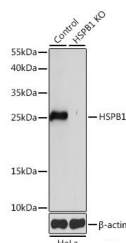
## Description

<b>Reactivity</b>	Human,Mouse,Rat
<b>Immunogen</b>	Recombinant fusion protein of human HSPB1
<b>Host</b>	Rabbit
<b>Isotype</b>	IgG
<b>Purification</b>	Affinity purification
<b>Conjugation</b>	Unconjugated
<b>Formulation</b>	PBS with 0.02% sodium azide,50% glycerol,pH7.3.

## Applications Recommended Dilution

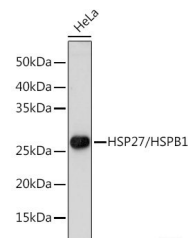
<b>WB</b>	1:500-1:2000
<b>IF</b>	1:50-1:200

## Data

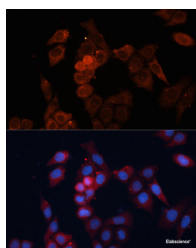


Western blot analysis of extracts from normal (control) and HSP27/HSP27/HSPB1 knockout (KO) HeLa cells using HSP27/HSP27/HSPB1 Polyclonal Antibody at 1:1000 dilution.

**Observed Mw:27KDa**  
**Calculated Mw:22kDa**



Western blot analysis of extracts of HeLa cells using HSP27/HSP27/HSPB1 Polyclonal Antibody at 1:1000 dilution.



Immunofluorescence analysis of HeLa cells using HSP27/HSP27/HSPB1 Polyclonal antibody at dilution of 1:100. Blue: DAPI for nuclear staining.

## Preparation & Storage

**Storage** Store at -20°C. Avoid freeze / thaw cycles.

## Background

The protein encoded by this gene is induced by environmental stress and developmental changes. The encoded protein is

## For Research Use Only

A Reliable Research Partner in Life Science and Medicine

Toll-free: 1-888-852-8623

Web: [www.elabscience.com](http://www.elabscience.com)

Tel: 1-832-243-6086

Email: [techsupport@elabscience.com](mailto:techsupport@elabscience.com)

Fax: 1-832-243-6017

# **(KO Validated) HSPB1 Polyclonal Antibody**

Catalog Number:E-AB-66764



involved in stress resistance and actin organization and translocates from the cytoplasm to the nucleus upon stress induction. Defects in this gene are a cause of Charcot-Marie-Tooth disease type 2F (CMT2F) and distal hereditary motor neuropathy (dHMN).

---

## **For Research Use Only**

A Reliable Research Partner in Life Science and Medicine

Toll-free: 1-888-852-8623

Web: [www.elabscience.com](http://www.elabscience.com)

Tel: 1-832-243-6086

Email: [techsupport@elabscience.com](mailto:techsupport@elabscience.com)

Fax: 1-832-243-6017