

# CD5 Monoclonal Antibody

Catalog Number:E-AB-71037



**Note:** Centrifuge before opening to ensure complete recovery of vial contents.

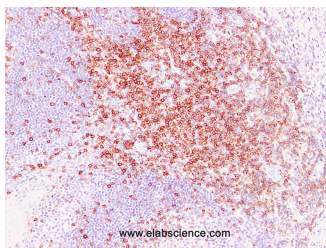
## Description

<b>Reactivity</b>	Human
<b>Immunogen</b>	Full length protein from eukaryotic expression system.
<b>Host</b>	Mouse
<b>Isotype</b>	IgG
<b>Clone</b>	LE2G1
<b>Purification</b>	Affinity purification
<b>Conjugation</b>	Unconjugated
<b>Formulation</b>	PBS with 0.02% sodium azide and 50% glycerol pH 7.4.

## Applications Recommended Dilution

**IHC 1:100-1:200**

## Data



Immunohistochemistry (Formalin/PFA-fixed paraffin-embedded sections) analysis of Human tonsil tissue using CD5 Monoclonal Antibody with Cat#E-AB-71037 at dilution of 1:200.

## Preparation & Storage

**Storage** Store at -20°C. Avoid freeze / thaw cycles.

## Background

CD5 is mainly distributed in the thymus cells (95%) and peripheral blood lymphocytes (72%). In normal lymph nodes, CD5 is mainly distributed in the T cell area. It is mainly used for auxiliary diagnosis of T cell leukemia and T cell lymphoma. The mantle cell lymphoma is usually positive expression of CD5, and the follicular center cell lymphoma is usually negative expression.

## For Research Use Only

A Reliable Research Partner in Life Science and Medicine

Toll-free: 1-888-852-8623

Web: [www.elabscience.com](http://www.elabscience.com)

Tel: 1-832-243-6086

Email: [techsupport@elabscience.com](mailto:techsupport@elabscience.com)

Fax: 1-832-243-6017