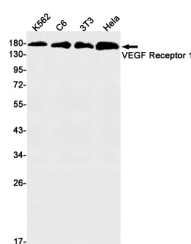


Recombinant VEGF Receptor 1 Monoclonal Antibody

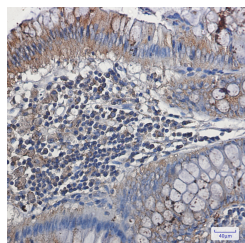
Catalog No.	E-AB-81493	Reactivity	H,M,R
Storage	Store at -20°C. Avoid freeze / thaw cycles.	Host	Rabbit
Applications	WB,IHC-P	Isotype	IgG

Note: Centrifuge before opening to ensure complete recovery of vial contents.

Images



Western blot detection of VEGF Receptor 1 in K562,C6,3T3,Hela cell lysates using VEGF Receptor 1 Rabbit mAb(1:1000 diluted).Predicted band size:151kDa.Observed band size:180kDa.



Immunohistochemistry of VEGF Receptor 1 in paraffin-embedded Human colon cancer tissue using VEGF Receptor 1 Rabbit mAb at dilution 1:50

Immunogen Information

Immunogen	A synthetic peptide of human VEGF Receptor 1
GeneID	2321
Swissprot	P17948
Synonyms	VEGFR-1,VEGF Receptor 1,FLT-1,FLT,FRT,VEGFR1,Fms-like tyrosine kinase 1

Product Information

Calculated MW	151kDa
Observed MW	180kDa
Buffer	50mM Tris-Glycine(pH 7.4), 0.15M NaCl, 40% Glycerol, 0.01% Sodium azide and 0.05% protective protein
Purify	Affinity Purified
Clone No.	R06-1A4
Dilution	WB 1:500-1:1000 IHC 1:50-1:100

Background

This gene encodes a member of the vascular endothelial growth factor receptor (VEGFR) family. VEGFR family members are receptor tyrosine kinases (RTKs) which contain an extracellular ligand-binding region with seven immunoglobulin (Ig)-like domains, a transmembrane segment, and a tyrosine kinase (TK) domain within the cytoplasmic domain. This protein binds to VEGFR-A, VEGFR-B and placental growth factor and plays an important role in angiogenesis and vasculogenesis. Expression of this receptor is found in vascular endothelial cells, placental trophoblast cells and peripheral blood monocytes. Multiple transcript variants encoding different isoforms have been found for this gene. Isoforms include a full-length transmembrane receptor isoform and shortened, soluble isoforms. The soluble isoforms are associated with the onset of pre-eclampsia.

For Research Use Only

Thank you for your recent purchase.
 If you would like to learn more about antibodies, please visit www.elabscience.com.

**Focus on your research
 Service for life science**

Applications:WB-Western Blot IHC-Immunohistochemistry IF-Immunofluorescence IP-Immunoprecipitation FC-Flow cytometry ChIP-Chromatin Immunoprecipitation Reactivity: H-Human R-Rat M-Mouse Mk-Monkey Dg-Dog Ch-Chicken Hm-Hamster Rb-Rabbit Sh-Sheep Pg-Pig Z-Zebrafish X-Xenopus C-Cow.