

APC Anti-Mouse CD115 Antibody[AFS98]

Catalog No.	E-AB-F1107E	Reactivity	Mouse
Storage	Store at 2~8°C, Avoid freeze / thaw cycles	Applications	FCM

Important Note: Centrifuge before opening to ensure complete recovery of vial contents.

Antigen Information

Alternate Names	Macrophage colony-stimulating factor 1 receptor,CSF-1 receptor (EC:2.7.10.1),CSF-1-R,CSF-1R,M-CSF-R,Proto-oncogene c-Fms,CD115,Csf1r,Csfmr,Fms
Uniprot ID	P09581
Background	CSF-1R, also known as CD115 and M-CSFR, is a single-pass type I membrane protein and member of the platelet-derived growth factor receptor family. This c-fms (Fms proto-oncogene) gene product's natural ligands include M-CSF and IL-34. Structural studies of CD115 have described an Ig-like extracellular domain, a transmembrane domain, an intracellular juxtamembrane domain, a split tyrosine kinase domain, and a C-terminal tail receptor. Receptor activation induces homodimerization in addition to phosphorylation and ubiquitination of intracellular residues. CD115 directly influences tissue macrophage and osteoclast differentiation and proliferation. It is expressed on monocytes/macrophages, peritoneal exudate cells, plasmacytoid and conventional dendritic cells, and osteoclasts.

Product Details

Form	Liquid
Size	50Tests/100Tests/100Tests×2
Clone No.	AFS98
Host	Rat
Isotype	Rat IgG2a, κ
Reactivity	Mouse
Application	FCM
Isotype Control	APC Rat IgG2a, κ Isotype Control[2A3] [Product E-AB-F09832E]
Storage Buffer	Phosphate buffered solution, pH 7.2, containing 0.09% stabilizer and 1% protein protectant.
Shipping	Biological ice pack at 4 °C
Stability & Storage	Keep as concentrated solution. Store at 2~8°C and protected from prolonged exposure to light.Do not freeze. This product is guaranteed up to one year from purchase.

For Research Use Only

Thank you for your recent purchase.

If you would like to learn more about antibodies,please visit www.elabscience.com.

**Focus on your research
Service for life science**

Applications:Activ- Activation; Block- Blocking; Separation- Cell Separation ; Cell Sep-Neg- Cell Separation by Negative Selection; FA- Functional Assay; Neut- Neutralization; Stim- Stimulation; FCM- Flow Cytometry; ICFM: Intracellular Staining for Flow Cytometry; WB- Western Blotting; IHC- Immunohistochemistry; IF- Immunofluorescence; IP- Immunoprecipitation

Fluorophore

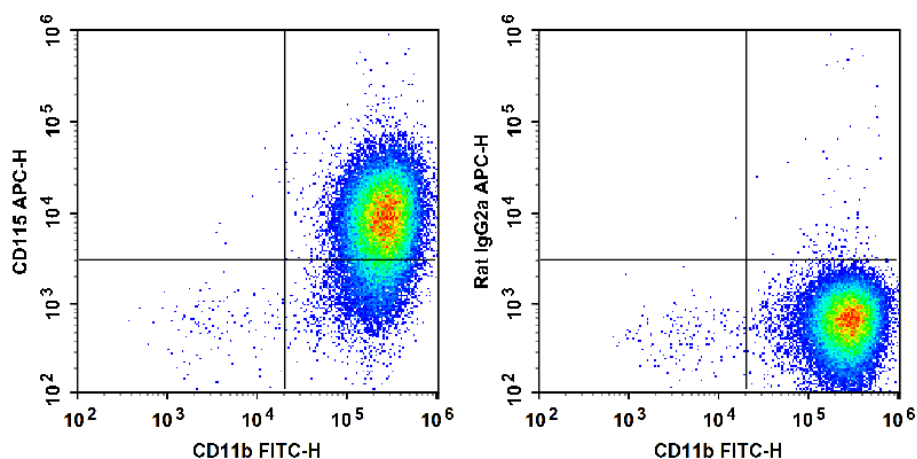
Conjugation: APC

APC is designed to be excited by the Red (627-640 nm) laser and detected using an optical filter centered near 660 nm (e.g., a 660/20 nm bandpass filter).

Recommended usage

Each lot of this antibody is quality control tested by flow cytometric analysis. The amount of the reagent is suggested to be used 5 μ L of antibody per test (million cells in 100 μ L staining volume or per 100 μ L of whole blood). Please check your vial before the experiment. Since applications vary, the appropriate dilutions must be determined for individual use.

Product data



C57BL/6 murine abdominal macrophages elicited by starch broth are stained with FITC Anti-Mouse CD11b Antibody and APC Anti-Mouse CD115 Antibody (Left). Abdominal macrophages are stained with FITC Anti-Mouse CD11b Antibody and APC Rat IgG2a, κ Isotype Control (Right).

Related Information

1. Sample Preparation for Flow Cytometry <https://www.elabscience.com/List-detail-5594.html>
2. Staining Cell Surface Targets for Flow Cytometry <https://www.elabscience.com/List-detail-5568.html>
3. Flow Cytometry Troubleshooting Tips <https://www.elabscience.com/List-detail-5593.html>
4. How to select the appropriate detection channel through the spectrogram? <https://www.elabscience.com/List-detail-459742.html>

For Research Use Only

Thank you for your recent purchase.

If you would like to learn more about antibodies, please visit www.elabscience.com.

**Focus on your research
Service for life science**

Applications: Activ- Activation; Block- Blocking; Separation- Cell Separation; Cell Sep-Neg- Cell Separation by Negative Selection; FA- Functional Assay; Neut- Neutralization; Stim- Stimulation; FCM- Flow Cytometry; ICFM- Intracellular Staining for Flow Cytometry; WB- Western Blotting; IHC- Immunohistochemistry; IF- Immunofluorescence; IP- Immunoprecipitation