

## PE/Cyanine5 Anti-Mouse CD49b Antibody[DX5]

<b>Catalog No.</b>	E-AB-F1116UG	<b>Reactivity</b>	Mouse
<b>Storage</b>	Store at 2~8°C, Avoid freeze / thaw cycles	<b>Applications</b>	FCM

**Important Note:** Centrifuge before opening to ensure complete recovery of vial contents.

### Antigen Information

<b>Alternate Names</b>	Integrin alpha-2,CD49 antigen-like family member B,Collagen receptor,Platelet membrane glycoprotein Ia,GPIa,VLA-2 subunit alpha,CD49b
<b>Uniprot ID</b>	Q62469
<b>Background</b>	DX5 antigen has been recently characterized as CD49b. It is a 150 kD integrin $\alpha$ chain also known as $\alpha 2$ integrin, VLA-2 $\alpha$ chain, and integrin $\alpha 2$ chain. CD49b non-covalently associates with CD29 ( $\beta 1$ integrin) to form the CD49b/CD29 complex known as VLA-2, a receptor for collagen and laminin. CD49b is expressed on platelets, the majority of NK cells, NKT cells, and a small subset of CD8+ T cells (this population can be significantly increased following viral infection). DX5 is used for the identification and isolation of NK cells, and is especially useful for identifying NK cells in mice lacking the NK1.1 antigen.

### Product Details

<b>Form</b>	Liquid
<b>Concentration</b>	0.2 mg/mL
<b>Size</b>	25 $\mu$ g/100 $\mu$ g
<b>Clone No.</b>	DX5
<b>Host</b>	Rat
<b>Isotype</b>	Rat IgM, $\kappa$
<b>Reactivity</b>	Mouse
<b>Application</b>	FCM
<b>Isotype Control</b>	<a href="#">PE/Cyanine5 Rat IgM, <math>\kappa</math> Isotype Control[RTK2118]</a> [ <a href="#">Product E-AB-F09773G</a> ]
<b>Storage Buffer</b>	Phosphate buffered solution, pH 7.2, containing 0.09% stabilizer and 1% protein protectant.
<b>Shipping</b>	Biological ice pack at 4 °C
<b>Stability &amp; Storage</b>	Keep as concentrated solution. Store at 2~8°C and protected from prolonged exposure to light.Do not freeze. This product is guaranteed up to one year from purchase.

#### For Research Use Only

Thank you for your recent purchase.

If you would like to learn more about antibodies,please visit [www.elabscience.com](http://www.elabscience.com).

**Focus on your research  
Service for life science**

Applications:Activ- Activation; Block- Blocking; Separation- Cell Separation ; Cell Sep-Neg- Cell Separation by Negative Selection; FA- Functional Assay; Neut- Neutralization; Stim- Stimulation; FCM- Flow Cytometry; ICFM: Intracellular Staining for Flow Cytometry; WB- Western Blotting; IHC- Immunohistochemistry; IF- Immunofluorescence; IP- Immunoprecipitation

## Fluorophore

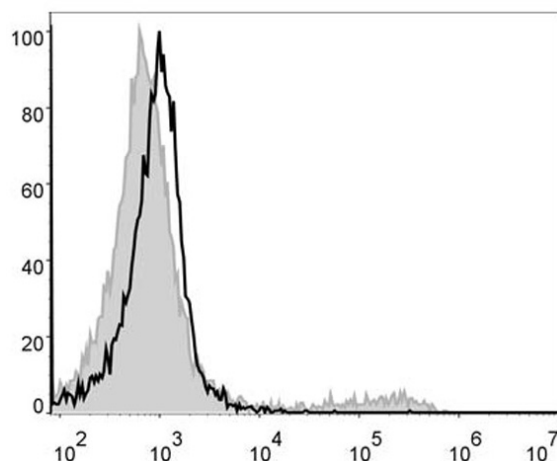
**Conjugation:** PE/Cyanine5

PE/Cyanine5 is designed to be excited by the Blue (488 nm), Green (532 nm) and yellow-green (561 nm) lasers and detected using an optical filter centered near 670 nm (e.g., a 690/50 nm bandpass filter).

## Recommended usage

Each lot of this antibody is quality control tested by flow cytometric analysis. Please check your vial before the experiment. Since applications vary, the appropriate dilutions must be determined for individual use. We suggest each investigator should titrate the reagent to obtain optimal results [The recommended concentration is 0.1-1  $\mu\text{g}/10^6$  cells in 100  $\mu\text{L}$  volume].

## Product data



C57BL/6 murine bone marrow cells are stained with PE/Cyanine5 Anti-Mouse CD49b Antibody (filled gray histogram). Unstained bone marrow cells (empty black histogram) are used as control.

## Related Information

1. Sample Preparation for Flow Cytometry <https://www.elabscience.com/List-detail-5594.html>
2. Staining Cell Surface Targets for Flow Cytometry <https://www.elabscience.com/List-detail-5568.html>
3. Flow Cytometry Troubleshooting Tips <https://www.elabscience.com/List-detail-5593.html>
4. How to select the appropriate detection channel through the spectrogram? <https://www.elabscience.com/List-detail-459742.html>

### For Research Use Only

Thank you for your recent purchase.

If you would like to learn more about antibodies, please visit [www.elabscience.com](http://www.elabscience.com).

**Focus on your research  
Service for life science**

Applications: Activ- Activation; Block- Blocking; Separation- Cell Separation ; Cell Sep-Neg- Cell Separation by Negative Selection; FA- Functional Assay; Neut- Neutralization; Stim- Stimulation; FCM- Flow Cytometry; ICFM: Intracellular Staining for Flow Cytometry; WB- Western Blotting; IHC- Immunohistochemistry; IF- Immunofluorescence; IP- Immunoprecipitation