

Recombinant Mouse Cathepsin L/CTSL Protein (His Tag)



Catalog Number:PKSM041247

Note: Centrifuge before opening to ensure complete recovery of vial contents.

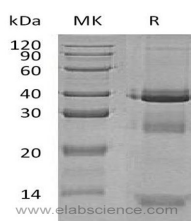
Description

Synonyms	Cathepsin L1; Major excreted protein; p39 cysteine proteinase; Ctsl1;1190035F06Rik
Species	Mouse
Expression Host	Human Cells
Sequence	Thr18-Asn334
Accession	P06797
Calculated Molecular Weight	36.8 kDa
Observed molecular weight	13-40 kDa
Tag	C-6His

Properties

Purity	> 95 % as determined by reducing SDS-PAGE.
Endotoxin	< 1.0 EU per µg as determined by the LAL method.
Storage	Generally, lyophilized proteins are stable for up to 12 months when stored at -20 to -80°C. Reconstituted protein solution can be stored at 4-8°C for 2-7 days. Aliquots of reconstituted samples are stable at < -20°C for 3 months.
Shipping	This product is provided as lyophilized powder which is shipped with ice packs.
Formulation	Lyophilized from a 0.2 µM filtered solution of 20mM PB,150mM NaCl, pH7.4.
Reconstitution	Please refer to the printed manual for detailed information.

Data



Background

Mouse Cathepsin L is a lysosomal cysteine proteinase which is a member of the peptidase C1 family. This protein is a dimer composed of disulfide-linked heavy and light chains, both produced from a single protein precursor. Cathepsin L plays a major role in intracellular protein catabolism. Its substrates include collagen and elastin, as well as alpha-1 protease inhibitor, a major controlling element of neutrophil elastase activity. Cathepsin L has been implicated in several pathologic processes, including myofibril necrosis in myopathies and in myocardial ischemia, and in the renal tubular response to proteinuria.

For Research Use Only

A Reliable Research Partner in Life Science and Medicine

Toll-free: 1-888-852-8623

Web: www.elabscience.com

Tel: 1-832-243-6086

Email: techsupport@elabscience.com

Fax: 1-832-243-6017