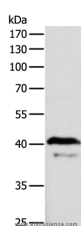


ADAP1 Polyclonal Antibody

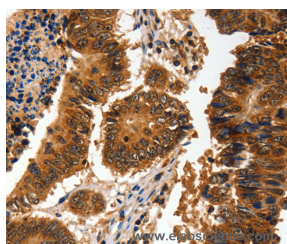
Catalog No.	E-AB-10033	Reactivity	H,M
Storage	Store at -20°C. Avoid freeze / thaw cycles.	Host	Rabbit
Applications	WB,IHC,ELISA	Isotype	IgG

Note: Centrifuge before opening to ensure complete recovery of vial contents.

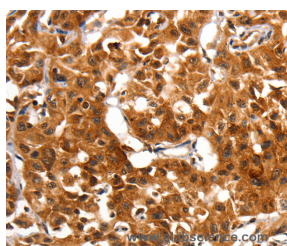
Images



Western Blot analysis of Mouse brain tissue using ADAP1 Polyclonal Antibody at dilution of 1:500



Immunohistochemistry of paraffin-embedded Human colon cancer using ADAP1 Polyclonal Antibody at dilution of 1:60



Immunohistochemistry of paraffin-embedded Human lung cancer using ADAP1 Polyclonal Antibody at dilution of 1:60

Immunogen Information

Immunogen	Recombinant protein of human ADAP1
Gene Accession	BC033747
Swissprot	O75689
Synonyms	GCS1L,CENTA1,p42IP4

Product Information

Calculated MW	43kDa
Buffer	PBS with 0.05% sodium azide and 50% glycerol, PH7.4
Purify	Affinity purification
Dilution	WB 1:200-1:1000, IHC 1:100-1:200

Background

Arf-GAP with dual PH domain-containing protein 1 is a protein that in humans is encoded by the ADAP1 gene. GTPase-activating protein for the ADP ribosylation factor family. Binds phosphatidylinositol 3,4,5-trisphosphate (PtdInsP3) and inositol 1,3,4,5-tetrakisphosphate (InsP4).

For Research Use Only

Thank you for your recent purchase.
 If you would like to learn more about antibodies, please visit www.elabscience.com.

Focus on your research
Service for life science

Applications: WB-Western Blot IHC-Immunohistochemistry IF-Immunofluorescence IP-Immunoprecipitation FC-Flow cytometry ChIP-Chromatin Immunoprecipitation Reactivity: H-Human R-Rat M-Mouse Mk-Monkey Dg-Dog Ch-Chicken Hm-Hamster Rb-Rabbit Sh-Sheep Pg-Pig Z-Zebrafish X-Xenopus C-Cow.