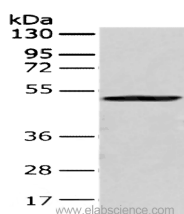


## CRTAM Polyclonal Antibody

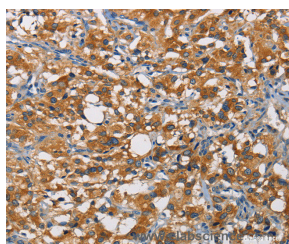
|                     |   |                   |        |
|---------------------|---|-------------------|--------|
| <b>Catalog No.</b>  | E-AB-10260                                  | <b>Reactivity</b> | H      |
| <b>Storage</b>      | Store at -20°C. Avoid freeze / thaw cycles. | <b>Host</b>       | Rabbit |
| <b>Applications</b> | WB,IHC,ELISA                                | <b>Isotype</b>    | IgG    |

**Note:** Centrifuge before opening to ensure complete recovery of vial contents.

### Images



Western Blot analysis of 293T cell using CRTAM Polyclonal Antibody at dilution of 1:250



Immunohistochemistry of paraffin-embedded Human thyroid cancer tissue using CRTAM Polyclonal Antibody at dilution of 1:60

### Immunogen Information

|                       |                                    |
|-----------------------|------------------------------------|
| <b>Immunogen</b>      | Recombinant protein of human CRTAM |
| <b>Gene Accession</b> | BC070266                           |
| <b>Swissprot</b>      | O95727                             |
| <b>Synonyms</b>       | CD355                              |

### Product Information

|                      |   |
|----------------------|---|
| <b>Calculated MW</b> | 45kDa   |
| <b>Observed MW</b>   | Refer to Figures                                    |
| <b>Buffer</b>        | PBS with 0.05% sodium azide and 50% glycerol, PH7.4 |
| <b>Purify</b>        | Affinity purification                               |
| <b>Dilution</b>      | WB 1:500-1:2000, IHC 1:50-1:200                     |

### Background

The CRTAM gene is upregulated in CD4 (see MIM 186940)-positive and CD8 (see CD8A; MIM 186910)-positive T cells and encodes a type I transmembrane protein with V and C1-like Ig domains. Interaction with CADM1 promotes natural killer (NK) cell cytotoxicity and interferon-gamma (IFN-gamma) secretion by CD8+ cells in vitro as well as NK cell-mediated rejection of tumors expressing CADM3 in vivo.

#### For Research Use Only

Thank you for your recent purchase.  
 If you would like to learn more about antibodies, please visit [www.elabscience.com](http://www.elabscience.com).

**Focus on your research  
 Service for life science**

Applications:WB-Western Blot IHC-Immunohistochemistry IF-Immunofluorescence IP-Immunoprecipitation FC-Flow cytometry ChIP-Chromatin Immunoprecipitation Reactivity: H-Human R-Rat M-Mouse Mk-Monkey Dg-Dog Ch-Chicken Hm-Hamster Rb-Rabbit Sh-Sheep Pg-Pig Z-Zebrafish X-Xenopus C-Cow.