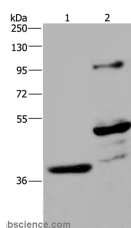


GAS7 Polyclonal Antibody

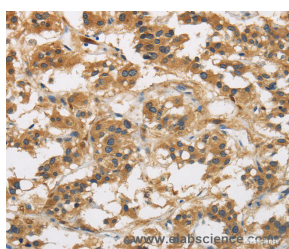
Catalog No.	E-AB-10340	Reactivity	H,M,R
Storage	Store at -20°C. Avoid freeze / thaw cycles.	Host	Rabbit
Applications	WB,IHC,ELISA	Isotype	IgG

Note: Centrifuge before opening to ensure complete recovery of vial contents.

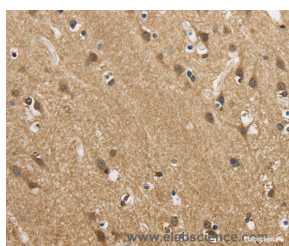
Images



Western Blot analysis of Human fetal brain and Mouse brain tissue using GAS7 Polyclonal Antibody at dilution of 1:625



Immunohistochemistry of paraffin-embedded Human thyroid cancer using GAS7 Polyclonal Antibody at dilution of 1:50



Immunohistochemistry of paraffin-embedded Human brain using GAS7 Polyclonal Antibody at dilution of 1:50

Immunogen Information

Immunogen	Recombinant protein of human GAS7
Gene Accession	BC001152
Swissprot	O60861
Synonyms	MLL/GAS7

Product Information

Calculated MW	54kDa
Buffer	PBS with 0.05% sodium azide and 50% glycerol, PH7.4
Purify	Affinity purification
Dilution	WB 1:500-1:2000, IHC 1:50-1:200

Background

Growth arrest-specific 7 is expressed primarily in terminally differentiated brain cells and predominantly in mature cerebellar Purkinje neurons. GAS7 plays a putative role in neuronal development. Several transcript variants encoding proteins which vary in the N-terminus have been described.

For Research Use Only

Thank you for your recent purchase.
 If you would like to learn more about antibodies, please visit www.elabscience.com.

**Focus on your research
 Service for life science**

Applications:WB-Western Blot IHC-Immunohistochemistry IF-Immunofluorescence IP-Immunoprecipitation FC-Flow cytometry ChIP-Chromatin Immunoprecipitation Reactivity: H-Human R-Rat M-Mouse Mk-Monkey Dg-Dog Ch-Chicken Hm-Hamster Rb-Rabbit Sh-Sheep Pg-Pig Z-Zebrafish X-Xenopus C-Cow.