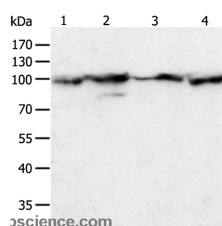


## HSP90B1 Polyclonal Antibody

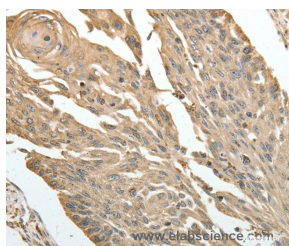
<b>Catalog No.</b>	E-AB-10353	<b>Reactivity</b>	H,M,R
<b>Storage</b>	Store at -20°C. Avoid freeze / thaw cycles.	<b>Host</b>	Rabbit
<b>Applications</b>	WB,IHC,ELISA	<b>Isotype</b>	IgG

**Note:** Centrifuge before opening to ensure complete recovery of vial contents.

### Images



Western Blot analysis of HeLa cell and Human liver cancer tissue, Jurkat and NIH/3T3 cell using HSP90B1 Polyclonal Antibody at dilution of 1:500



Immunohistochemistry of paraffin-embedded Human cervical cancer using HSP90B1 Polyclonal Antibody at dilution of 1:30

### Immunogen Information

<b>Immunogen</b>	Recombinant protein of human HSP90B1
<b>Gene Accession</b>	BC009195
<b>Swissprot</b>	P14625
<b>Synonyms</b>	ECGP,GP96,TRA1,GRP94

### Product Information

<b>Calculated MW</b>	92kDa
<b>Buffer</b>	PBS with 0.05% sodium azide and 50% glycerol, PH7.4
<b>Purify</b>	Affinity purification
<b>Dilution</b>	WB 1:500-1:2000, IHC 1:25-1:100

### Background

This gene encodes a member of a family of adenosine triphosphate(ATP)-metabolizing molecular chaperones with roles in stabilizing and folding other proteins. The encoded protein is localized to melanosomes and the endoplasmic reticulum. Expression of this protein is associated with a variety of pathogenic states, including tumor formation. There is a microRNA gene located within the 5' exon of this gene. There are pseudogenes for this gene on chromosomes 1 and 15.

#### For Research Use Only

Thank you for your recent purchase.  
 If you would like to learn more about antibodies, please visit [www.elabscience.com](http://www.elabscience.com).

**Focus on your research  
 Service for life science**

Applications:WB-Western Blot IHC-Immunohistochemistry IF-Immunofluorescence IP-Immunoprecipitation FC-Flow cytometry ChIP-Chromatin Immunoprecipitation Reactivity: H-Human R-Rat M-Mouse Mk-Monkey Dg-Dog Ch-Chicken Hm-Hamster Rb-Rabbit Sh-Sheep Pg-Pig Z-Zebrafish X-Xenopus C-Cow.