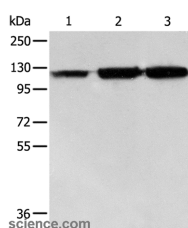


## HSP105 Polyclonal Antibody

<b>Catalog No.</b>	E-AB-10380	<b>Reactivity</b>	H,M,R
<b>Storage</b>	Store at -20°C. Avoid freeze / thaw cycles.	<b>Host</b>	Rabbit
<b>Applications</b>	WB,ELISA	<b>Isotype</b>	IgG

**Note:** Centrifuge before opening to ensure complete recovery of vial contents.

### Images



Western Blot analysis of PC3 cell, Human colon cancer and liver cancer tissue using HSP105 Polyclonal Antibody at dilution of 1:500

### Immunogen Information

<b>Immunogen</b>	Recombinant protein of human HSPH1
<b>Gene Accession</b>	BC037553
<b>Swissprot</b>	Q92598
<b>Synonyms</b>	HSP105,HSP105A,HSP105B,NY-CO-25

### Product Information

<b>Calculated MW</b>	97kDa
<b>Buffer</b>	PBS with 0.05% sodium azide and 50% glycerol, PH7.4
<b>Purify</b>	Affinity purification
<b>Dilution</b>	WB 1:500-1:2000

### Background

Heat shock protein 105 kDa is a protein that in humans is encoded by the HSPH1 gene. Prevents the aggregation of denatured proteins in cells under severe stress, on which the ATP levels decrease markedly. Inhibits HSPA8/HSC70 ATPase and chaperone activities. Highly expressed in testis. Present at lower levels in most brain regions, except cerebellum. Overexpressed in cancer cells. Phosphorylation on Ser-509 may be important for regulation of the HSPA8/HSC70 chaperone activity.

#### For Research Use Only

Thank you for your recent purchase.  
 If you would like to learn more about antibodies, please visit [www.elabscience.com](http://www.elabscience.com).

**Focus on your research  
 Service for life science**

Applications:WB-Western Blot IHC-Immunohistochemistry IF-Immunofluorescence IP-Immunoprecipitation FC-Flow cytometry ChIP-Chromatin Immunoprecipitation Reactivity: H-Human R-Rat M-Mouse Mk-Monkey Dg-Dog Ch-Chicken Hm-Hamster Rb-Rabbit Sh-Sheep Pg-Pig Z-Zebrafish X-Xenopus C-Cow.