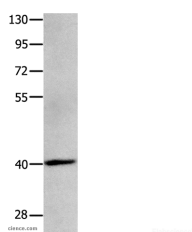


MAGEB4 Polyclonal Antibody

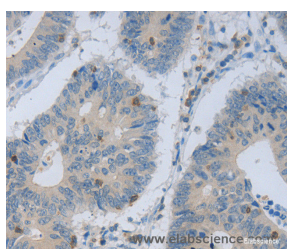
| | | | |
|---------------------|---------------------------------------------|-------------------|--------|
| Catalog No. | E-AB-10443 | Reactivity | H |
| Storage | Store at -20°C. Avoid freeze / thaw cycles. | Host | Rabbit |
| Applications | WB,IHC,ELISA | Isotype | IgG |

Note: Centrifuge before opening to ensure complete recovery of vial contents.

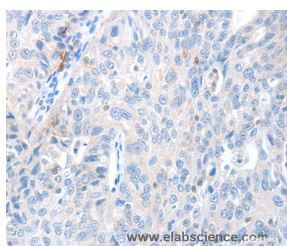
Images



Western Blot analysis of Human brain glioma tissue using MAGEB4 Polyclonal Antibody at dilution of 1:550



Immunohistochemistry of paraffin-embedded Human colon cancer using MAGEB4 Polyclonal Antibody at dilution of 1:40



Immunohistochemistry of paraffin-embedded Human ovarian cancer using MAGEB4 Polyclonal Antibody at dilution of 1:40

Immunogen Information

| | |
|-----------------------|-------------------------------------|
| Immunogen | Recombinant protein of human MAGEB4 |
| Gene Accession | BC032852 |
| Swissprot | O15481 |
| Synonyms | CT3.6 |

Product Information

| | |
|----------------------|-----------------------------------------------------|
| Calculated MW | 39kDa |
| Buffer | PBS with 0.05% sodium azide and 50% glycerol, PH7.4 |
| Purify | Affinity purification |
| Dilution | WB 1:500-1:2000, IHC 1:15-1:50 |

Background

This gene is a member of the MAGEB gene family. The members of this family have their entire coding sequences located in the last exon, and the encoded proteins show 50 to 68 sequence identity to each other. The promoters and first exons of the MAGEB genes show considerable variability, suggesting that the existence of this gene family enables the same function to be expressed under different transcriptional controls. The MAGEB genes are clustered on chromosome Xp22-p21. This gene sequence ends in the first intron of MAGEB1, another family member. This gene is expressed in testis.

For Research Use Only

Thank you for your recent purchase.
 If you would like to learn more about antibodies, please visit www.elabscience.com.

**Focus on your research
 Service for life science**

Applications:WB-Western Blot IHC-Immunohistochemistry IF-Immunofluorescence IP-Immunoprecipitation FC-Flow cytometry ChIP-Chromatin Immunoprecipitation Reactivity: H-Human R-Rat M-Mouse Mk-Monkey Dg-Dog Ch-Chicken Hm-Hamster Rb-Rabbit Sh-Sheep Pg-Pig Z-Zebrafish X-Xenopus C-Cow.