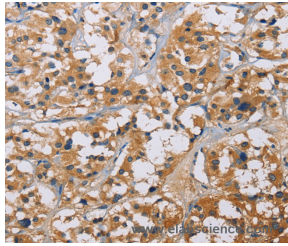


NME5 Polyclonal Antibody

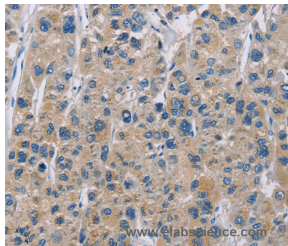
Catalog No.	E-AB-10494	Reactivity	H,M
Storage	Store at -20°C. Avoid freeze / thaw cycles.	Host	Rabbit
Applications	IHC,ELISA	Isotype	IgG

Note: Centrifuge before opening to ensure complete recovery of vial contents.

Images



Immunohistochemistry of paraffin-embedded Human thyroid cancer tissue using NME5 Polyclonal Antibody at dilution 1:50



Immunohistochemistry of paraffin-embedded Human liver cancer tissue using NME5 Polyclonal Antibody at dilution 1:50

Immunogen Information

Immunogen	Recombinant protein of human NME5
Gene Accession	BC026182
Swissprot	P56597
Synonyms	NM23H5,RSPH23,NM23-H5

Product Information

Buffer	PBS with 0.05% sodium azide and 50% glycerol, PH7.4
Purify	Affinity purification
Dilution	IHC 1:50-1:200

Background

The NME5 gene encodes a 212-amino acid polypeptide with homology to the NDP kinases. Northern blot analysis detected abundant expression of a 1.1-kb mRNA in testis. In situ hybridization to testis revealed NME5 mRNA in the seminiferous tubules in a pattern consistent with stage-specific expression in germinal cells during spermatogenesis.

For Research Use Only

Thank you for your recent purchase.
If you would like to learn more about antibodies, please visit www.elabscience.com.

**Focus on your research
Service for life science**

Applications:WB-Western Blot IHC-Immunohistochemistry IF-Immunofluorescence IP-Immunoprecipitation FC-Flow cytometry ChIP-Chromatin Immunoprecipitation Reactivity: H-Human R-Rat M-Mouse Mk-Monkey Dg-Dog Ch-Chicken Hm-Hamster Rb-Rabbit Sh-Sheep Pg-Pig Z-Zebrafish X-Xenopus C-Cow.