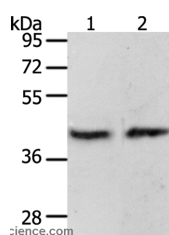


PAX8 Polyclonal Antibody

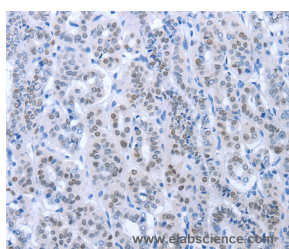
| | | | |
|---------------------|---|-------------------|--------|
| Catalog No. | E-AB-10528 | Reactivity | H,M,R |
| Storage | Store at -20°C. Avoid freeze / thaw cycles. | Host | Rabbit |
| Applications | WB,IHC,ELISA | Isotype | IgG |

Note: Centrifuge before opening to ensure complete recovery of vial contents.

Images



Western Blot analysis of MCF7 cell and Mouse brain tissue using PAX8 Polyclonal Antibody at dilution of 1:250



Immunohistochemistry of paraffin-embedded Human thyroid cancer using PAX8 Polyclonal Antibody at dilution of 1:35

Immunogen Information

| | |
|-----------------------|--|
| Immunogen | Recombinant protein of human PAX8 |
| Gene Accession | BC001060 |
| Swissprot | Q06710 |
| Synonyms | PAX8,paired box 8,Paired box protein Pax 8 |

Product Information

| | |
|----------------------|---|
| Calculated MW | 48kDa |
| Buffer | PBS with 0.05% sodium azide and 50% glycerol, PH7.4 |
| Purify | Affinity purification |
| Dilution | WB 1:200-1:1000, IHC 1:15-1:50 |

Background

This gene encodes a member of the paired box (PAX) family of transcription factors. Members of this gene family typically encode proteins that contain a paired box domain, an octapeptide, and a paired-type homeodomain. This nuclear protein is involved in thyroid follicular cell development and expression of thyroid-specific genes. Mutations in this gene have been associated with thyroid dysgenesis, thyroid follicular carcinomas and atypical follicular thyroid adenomas. Alternatively spliced transcript variants encoding different isoforms have been described.

For Research Use Only

Thank you for your recent purchase.
 If you would like to learn more about antibodies, please visit www.elabscience.com.

**Focus on your research
 Service for life science**

Applications:WB-Western Blot IHC-Immunohistochemistry IF-Immunofluorescence IP-Immunoprecipitation FC-Flow cytometry ChIP-Chromatin Immunoprecipitation Reactivity: H-Human R-Rat M-Mouse Mk-Monkey Dg-Dog Ch-Chicken Hm-Hamster Rb-Rabbit Sh-Sheep Pg-Pig Z-Zebrafish X-Xenopus C-Cow.