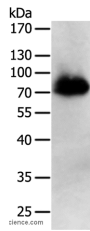


PRMT7 Polyclonal Antibody

Catalog No.	E-AB-10554	Reactivity	H
Storage	Store at -20°C. Avoid freeze / thaw cycles.	Host	Rabbit
Applications	WB,ELISA	Isotype	IgG

Note: Centrifuge before opening to ensure complete recovery of vial contents.

Images



Western Blot analysis of Human liver cancer tissue using PRMT7 Polyclonal Antibody at dilution of 1:500

Immunogen Information

Immunogen	Recombinant protein of human PRMT7
Gene Accession	BC000146
Swissprot	Q9NVM4
Synonyms	ANM7,FLJ10640,Histone-arginine N-methyltransferase PRMT7,KIAA1933,PRMT7

Product Information

Calculated MW	78kDa
Buffer	PBS with 0.05% sodium azide and 50% glycerol, PH7.4
Purify	Affinity purification
Dilution	WB 1:500-1:2000

Background

Protein arginine methyltransferase 7 is a protein that in humans is encoded by the PRMT7 gene. Arginine methylation is an apparently irreversible protein modification catalyzed by arginine methyltransferases, such as PMT7, using S-adenosylmethionine (AdoMet) as the methyl donor. Arginine methylation is implicated in signal transduction, RNA transport, and RNA splicing. May be involved in etoposide-induced cytotoxicity, a chemotherapeutic agent frequently used for testicular cancer and small-cell lung cancer that can cause cytotoxicity in the treatment of other cancers. Down-regulation confers increased sensitivity to the Top1 inhibitor camptothecin (CPT).

For Research Use Only

Thank you for your recent purchase.
 If you would like to learn more about antibodies, please visit www.elabscience.com.

**Focus on your research
 Service for life science**

Applications:WB-Western Blot IHC-Immunohistochemistry IF-Immunofluorescence IP-Immunoprecipitation FC-Flow cytometry ChIP-Chromatin Immunoprecipitation Reactivity: H-Human R-Rat M-Mouse Mk-Monkey Dg-Dog Ch-Chicken Hm-Hamster Rb-Rabbit Sh-Sheep Pg-Pig Z-Zebrafish X-Xenopus C-Cow.