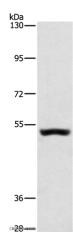


SYT17 Polyclonal Antibody

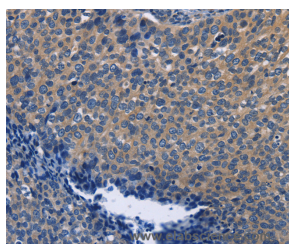
Catalog No.	E-AB-10623	Reactivity	H,M,R
Storage	Store at -20°C. Avoid freeze / thaw cycles.	Host	Rabbit
Applications	WB,IHC,ELISA	Isotype	IgG

Note: Centrifuge before opening to ensure complete recovery of vial contents.

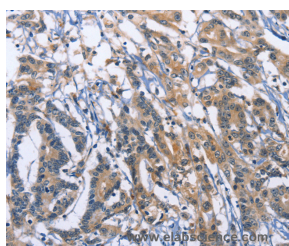
Images



Western Blot analysis of Mouse kidney tissue using SYT17 Polyclonal Antibody at dilution of 1:650



Immunohistochemistry of paraffin-embedded Human cervical cancer using SYT17 Polyclonal Antibody at dilution of 1:60



Immunohistochemistry of paraffin-embedded Human colon cancer using SYT17 Polyclonal Antibody at dilution of 1:60

Immunogen Information

Immunogen	Recombinant protein of human SYT17
Gene Accession	BC004518
Swissprot	Q9BSW7
Synonyms	B/K protein,Protein B/K,Synaptotagmin 17,Synaptotagmin XVII,Synaptotagmin-17,Syt17,SYT17,SytXVII

Product Information

Calculated MW	54kDa
Buffer	PBS with 0.05% sodium azide and 50% glycerol, PH7.4
Purify	Affinity purification
Dilution	WB 1:200-1:1000, IHC 1:50-1:200

Background

Expressed abundantly in brain (frontal and temporal lobes, hippocampus, hypothalamus, amygdala, substantia nigra, and pituitary), kidney, and prostate. Expressed in fetal brain, kidney and lung.

For Research Use Only

Thank you for your recent purchase.
 If you would like to learn more about antibodies, please visit www.elabscience.com.

Focus on your research
Service for life science

Applications:WB-Western Blot IHC-Immunohistochemistry IF-Immunofluorescence IP-Immunoprecipitation FC-Flow cytometry ChIP-Chromatin Immunoprecipitation Reactivity: H-Human R-Rat M-Mouse Mk-Monkey Dg-Dog Ch-Chicken Hm-Hamster Rb-Rabbit Sh-Sheep Pg-Pig Z-Zebrafish X-Xenopus C-Cow.