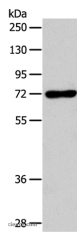


## CD218b Polyclonal Antibody

<b>Catalog No.</b>	E-AB-10677	<b>Reactivity</b>	H,M
<b>Storage</b>	Store at -20°C. Avoid freeze / thaw cycles.	<b>Host</b>	Rabbit
<b>Applications</b>	WB,ELISA	<b>Isotype</b>	IgG

**Note:** Centrifuge before opening to ensure complete recovery of vial contents.

### Images



Western Blot analysis of RAW264.7 cell using CD218b Polyclonal Antibody at dilution of 1:450

### Immunogen Information

<b>Immunogen</b>	Recombinant protein of human IL18RAP
<b>Gene Accession</b>	BC106765
<b>Swissprot</b>	O95256
<b>Synonyms</b>	ACPL,CD218b,IL18RB,CDw218b

### Product Information

<b>Calculated MW</b>	68kDa
<b>Buffer</b>	PBS with 0.05% sodium azide and 50% glycerol, PH7.4
<b>Purify</b>	Affinity purification
<b>Dilution</b>	WB 1:500-1:2000

### Background

Interleukin 18 receptor accessory protein, also known as IL18RAP and CDw218b (cluster of differentiationw218b), is a human gene. The protein encoded by this gene is an accessory subunit of the heterodimeric receptor for IL18. This protein enhances the IL18 binding activity of IL18R1 (IL1RRP), a ligand binding subunit of IL18 receptor. The coexpression of IL18R1 and this protein is required for the activation of NF-κB and MAPK8 (JNK) in response to IL18.

#### For Research Use Only

Thank you for your recent purchase.  
 If you would like to learn more about antibodies, please visit [www.elabscience.com](http://www.elabscience.com).

**Focus on your research  
 Service for life science**

Applications:WB-Western Blot IHC-Immunohistochemistry IF-Immunofluorescence IP-Immunoprecipitation FC-Flow cytometry ChIP-Chromatin Immunoprecipitation Reactivity: H-Human R-Rat M-Mouse Mk-Monkey Dg-Dog Ch-Chicken Hm-Hamster Rb-Rabbit Sh-Sheep Pg-Pig Z-Zebrafish X-Xenopus C-Cow.