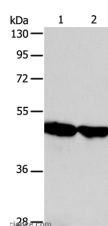


## AADAC Polyclonal Antibody

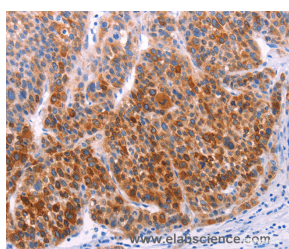
<b>Catalog No.</b>	E-AB-10690	<b>Reactivity</b>	H
<b>Storage</b>	Store at -20°C. Avoid freeze / thaw cycles.	<b>Host</b>	Rabbit
<b>Applications</b>	WB,IHC,ELISA	<b>Isotype</b>	IgG

**Note:** Centrifuge before opening to ensure complete recovery of vial contents.

### Images



Western Blot analysis of Human fetal liver and liver cancer tissue using AADAC Polyclonal Antibody at dilution of 1:600



Immunohistochemistry of paraffin-embedded Human liver cancer using AADAC Polyclonal Antibody at dilution of 1:30

### Immunogen Information

<b>Immunogen</b>	Recombinant protein of human AADAC
<b>Gene Accession</b>	BC032309
<b>Swissprot</b>	P22760
<b>Synonyms</b>	DAC,CES5A1

### Product Information

<b>Calculated MW</b>	46kDa
<b>Buffer</b>	PBS with 0.05% sodium azide and 50% glycerol, PH7.4
<b>Purify</b>	Affinity purification
<b>Dilution</b>	WB 1:500-1:2000, IHC 1:50-1:100

### Background

Microsomal arylacetamide deacetylase competes against the activity of cytosolic arylamine N-acetyltransferase, which catalyzes one of the initial biotransformation pathways for arylamine and heterocyclic amine carcinogens. Arylacetamide deacetylation is an important enzyme activity in the metabolic activation of arylamine substrates to ultimate carcinogens. Displays major serine hydrolase activity in liver microsomes. Hydrolyzes also flutamide, which is an antiandrogen drug used for the treatment of prostate cancer that occasionally causes severe hepatotoxicity. Displays cellular triglyceride lipase activity in liver. Increases intracellular fatty acids derived from hydrolysis of newly formed triglyceride stores.

#### For Research Use Only

Thank you for your recent purchase.  
 If you would like to learn more about antibodies, please visit [www.elabscience.com](http://www.elabscience.com).

**Focus on your research  
 Service for life science**

Applications:WB-Western Blot IHC-Immunohistochemistry IF-Immunofluorescence IP-Immunoprecipitation FC-Flow cytometry ChIP-Chromatin Immunoprecipitation Reactivity: H-Human R-Rat M-Mouse Mk-Monkey Dg-Dog Ch-Chicken Hm-Hamster Rb-Rabbit Sh-Sheep Pg-Pig Z-Zebrafish X-Xenopus C-Cow.