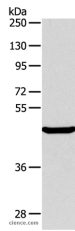


## ALKBH1 Polyclonal Antibody

|                     |   |                   |        |
|---------------------|---|-------------------|--------|
| <b>Catalog No.</b>  | E-AB-10699                                  | <b>Reactivity</b> | H,M    |
| <b>Storage</b>      | Store at -20°C. Avoid freeze / thaw cycles. | <b>Host</b>       | Rabbit |
| <b>Applications</b> | WB,ELISA                                    | <b>Isotype</b>    | IgG    |

**Note:** Centrifuge before opening to ensure complete recovery of vial contents.

### Images



Western Blot analysis of Mouse pancreas tissue using ALKBH1 Polyclonal Antibody at dilution of 1:400

### Immunogen Information

|                       |                                     |
|-----------------------|-------------------------------------|
| <b>Immunogen</b>      | Recombinant protein of human ALKBH1 |
| <b>Gene Accession</b> | BC025787                            |
| <b>Swissprot</b>      | Q13686                              |
| <b>Synonyms</b>       | ABH,ABH1,alkB,hABH,ALKBH            |

### Product Information

|                      |   |
|----------------------|---|
| <b>Calculated MW</b> | 44kDa   |
| <b>Buffer</b>        | PBS with 0.05% sodium azide and 50% glycerol, PH7.4 |
| <b>Purify</b>        | Affinity purification                               |
| <b>Dilution</b>      | WB 1:500-1:2000                                     |

### Background

This gene encodes a homolog to the E. coli alkB gene product. The E. coli alkB protein is part of the adaptive response mechanism of DNA alkylation damage repair. It is involved in damage reversal by oxidative demethylation of 1-methyladenine and 3-methylcytosine. Dioxygenase that repairs alkylated single-stranded DNA and RNA containing 3-methylcytosine by oxidative demethylation. Requires molecular oxygen, alpha-ketoglutarate and iron. May have a role in placental trophoblast lineage differentiation. Has DNA lyase activity and introduces double-stranded breaks at abasic sites. Cleaves both single-stranded DNA and double-stranded DNA at abasic sites, with the greatest activity towards double-stranded DNA with two abasic sites.

#### For Research Use Only

Thank you for your recent purchase.  
 If you would like to learn more about antibodies, please visit [www.elabscience.com](http://www.elabscience.com).

**Focus on your research  
 Service for life science**

Applications:WB-Western Blot IHC-Immunohistochemistry IF-Immunofluorescence IP-Immunoprecipitation FC-Flow cytometry ChIP-Chromatin Immunoprecipitation Reactivity: H-Human R-Rat M-Mouse Mk-Monkey Dg-Dog Ch-Chicken Hm-Hamster Rb-Rabbit Sh-Sheep Pg-Pig Z-Zebrafish X-Xenopus C-Cow.