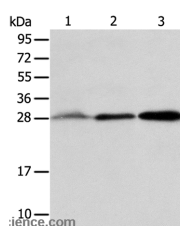


ALKBH2 Polyclonal Antibody

Catalog No.	E-AB-10700	Reactivity	H,M
Storage	Store at -20°C. Avoid freeze / thaw cycles.	Host	Rabbit
Applications	WB,ELISA	Isotype	IgG

Note: Centrifuge before opening to ensure complete recovery of vial contents.

Images



Western Blot analysis of Human fetal liver and seminoma tissue, RAW264.7 cell using ALKBH2 Polyclonal Antibody at dilution of 1:800

Immunogen Information

Immunogen	Recombinant protein of human ALKBH2
Gene Accession	BC070489
Swissprot	Q6NS38
Synonyms	ABH2

Product Information

Calculated MW	29kDa
Buffer	PBS with 0.05% sodium azide and 50% glycerol, PH7.4
Purify	Affinity purification
Dilution	WB 1:500-1:2000

Background

The Escherichia coli AlkB protein protects against the cytotoxicity of methylating agents by repair of the specific DNA lesions generated in single-stranded DNA. ALKBH2 and ALKBH3 are E. coli AlkB homologs that catalyze the removal of 1-methyladenine and 3-methylcytosine. Dioxygenase that repairs alkylated DNA and RNA containing 1-methyladenine and 3-methylcytosine by oxidative demethylation. Can also repair alkylated DNA containing 1-ethenoadenine (in vitro). Has strong preference for double-stranded DNA. Has low efficiency with single-stranded substrates. Requires molecular oxygen, alpha-ketoglutarate and iron.

For Research Use Only

Thank you for your recent purchase.
 If you would like to learn more about antibodies, please visit www.elabscience.com.

**Focus on your research
 Service for life science**

Applications:WB-Western Blot IHC-Immunohistochemistry IF-Immunofluorescence IP-Immunoprecipitation FC-Flow cytometry ChIP-Chromatin Immunoprecipitation Reactivity: H-Human R-Rat M-Mouse Mk-Monkey Dg-Dog Ch-Chicken Hm-Hamster Rb-Rabbit Sh-Sheep Pg-Pig Z-Zebrafish X-Xenopus C-Cow.