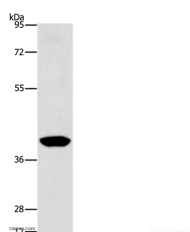


PHYKPL Polyclonal Antibody

Catalog No.	E-AB-10756	Reactivity	H,M
Storage	Store at -20°C. Avoid freeze / thaw cycles.	Host	Rabbit
Applications	WB,ELISA	Isotype	IgG

Note: Centrifuge before opening to ensure complete recovery of vial contents.

Images



Western Blot analysis of Human lymphoma tissue using PHYKPL Polyclonal Antibody at dilution of 1:500

Immunogen Information

Immunogen	Recombinant protein of human AGXT2L2
Gene Accession	BC008009
Swissprot	Q8IUZ5
Synonyms	PHLU,AGXT2L2

Product Information

Calculated MW	50kDa
Buffer	PBS with 0.05% sodium azide and 50% glycerol, PH7.4
Purify	Affinity purification
Dilution	WB 1:500-1:2000

Background

This is a nuclear gene encoding a mitochondrial enzyme that catalyzes the conversion of 5-phosphonoxy-L-lysine to ammonia, inorganic phosphate, and 2-aminoadipate semialdehyde. Mutations in this gene may cause phosphohydroxylysineuria. Alternative splicing results in multiple transcript variants.

For Research Use Only

Thank you for your recent purchase.

If you would like to learn more about antibodies, please visit www.elabscience.com.

**Focus on your research
 Service for life science**

Applications:WB-Western Blot IHC-Immunohistochemistry IF-Immunofluorescence IP-Immunoprecipitation FC-Flow cytometry ChIP-Chromatin Immunoprecipitation Reactivity: H-Human R-Rat M-Mouse Mk-Monkey Dg-Dog Ch-Chicken Hm-Hamster Rb-Rabbit Sh-Sheep Pg-Pig Z-Zebrafish X-Xenopus C-Cow.