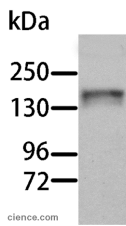


AOX1 Polyclonal Antibody

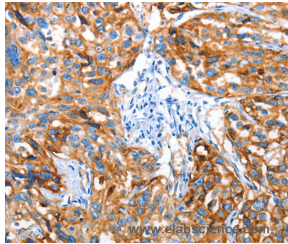
Catalog No.	E-AB-10765	Reactivity	H,M,R
Storage	Store at -20°C. Avoid freeze / thaw cycles.	Host	Rabbit
Applications	WB,IHC,ELISA	Isotype	IgG

Note: Centrifuge before opening to ensure complete recovery of vial contents.

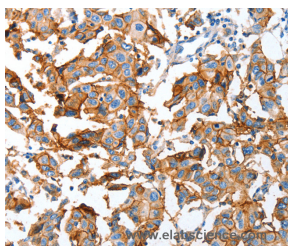
Images



Western Blot analysis of Human liver tissue using AOX1 Polyclonal Antibody at dilution of 1:1000



Immunohistochemistry of paraffin-embedded Human esophagus cancer using AOX1 Polyclonal Antibody at dilution of 1:65



Immunohistochemistry of paraffin-embedded Human breast cancer using AOX1 Polyclonal Antibody at dilution of 1:65

Immunogen Information

Immunogen	Recombinant protein of human AOX1
Gene Accession	BC117179
Swissprot	Q06278
Synonyms	AO,AOH1

Product Information

Calculated MW	148kDa
Buffer	PBS with 0.05% sodium azide and 50% glycerol, PH7.4
Purify	Affinity purification
Dilution	WB 1:500-1:2000, IHC 1:100-1:300

Background

Aldehyde oxidase produces hydrogen peroxide and, under certain conditions, can catalyze the formation of superoxide. Aldehyde oxidase is a candidate gene for amyotrophic lateral sclerosis.

For Research Use Only

Thank you for your recent purchase.
 If you would like to learn more about antibodies, please visit www.elabscience.com.

**Focus on your research
 Service for life science**

Applications:WB-Western Blot IHC-Immunohistochemistry IF-Immunofluorescence IP-Immunoprecipitation FC-Flow cytometry ChIP-Chromatin Immunoprecipitation Reactivity: H-Human R-Rat M-Mouse Mk-Monkey Dg-Dog Ch-Chicken Hm-Hamster Rb-Rabbit Sh-Sheep Pg-Pig Z-Zebrafish X-Xenopus C-Cow.