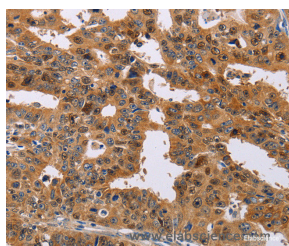


NIF3L1 Polyclonal Antibody

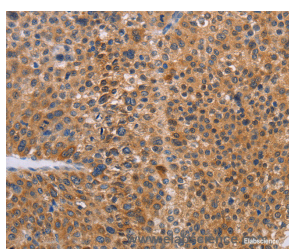
Catalog No.	E-AB-10783	Reactivity	H,M,R
Storage	Store at -20°C. Avoid freeze / thaw cycles.	Host	Rabbit
Applications	IHC,ELISA	Isotype	IgG

Note: Centrifuge before opening to ensure complete recovery of vial contents.

Images



Immunohistochemistry of paraffin-embedded Human gastric cancer tissue using NIF3L1 Polyclonal Antibody at dilution 1:30



Immunohistochemistry of paraffin-embedded Human liver cancer tissue using NIF3L1 Polyclonal Antibody at dilution 1:30

Immunogen Information

Immunogen	Recombinant protein of human NIF3L1
Gene Accession	BC007654
Swissprot	Q9GZT8
Synonyms	CALS-7,MDS015,ALS2CR1

Product Information

Buffer	PBS with 0.05% sodium azide and 50% glycerol, PH7.4
Purify	Affinity purification
Dilution	IHC 1:50-1:200

Background

NIF3-like protein 1 is a protein that in humans is encoded by the NIF3L1 gene. NIF3L1 has been shown to interact with COPS2. Expression analysis on cell lines revealed strong overexpression in a spermatogonia-derived cell line and a teratocarcinoma cell line. A human NIF3L1/GFP fusion protein showed localization of the protein in the cytoplasm.

For Research Use Only

Thank you for your recent purchase.
 If you would like to learn more about antibodies, please visit www.elabscience.com.

**Focus on your research
 Service for life science**

Applications:WB-Western Blot IHC-Immunohistochemistry IF-Immunofluorescence IP-Immunoprecipitation FC-Flow cytometry ChIP-Chromatin Immunoprecipitation Reactivity: H-Human R-Rat M-Mouse Mk-Monkey Dg-Dog Ch-Chicken Hm-Hamster Rb-Rabbit Sh-Sheep Pg-Pig Z-Zebrafish X-Xenopus C-Cow.