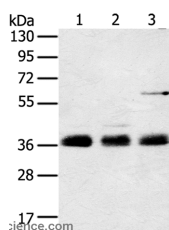


ANKRD1 Polyclonal Antibody

| | | | |
|---------------------|---|-------------------|--------|
| Catalog No. | E-AB-10801 | Reactivity | H,M,R |
| Storage | Store at -20°C. Avoid freeze / thaw cycles. | Host | Rabbit |
| Applications | WB,ELISA | Isotype | IgG |

Note: Centrifuge before opening to ensure complete recovery of vial contents.

Images



Western Blot analysis of Mouse lung tissue, NIH/3T3 and hepg2 cell using ANKRD1 Polyclonal Antibody at dilution of 1:400

Immunogen Information

| | |
|-----------------------|--|
| Immunogen | Recombinant protein of human ANKRD1 |
| Gene Accession | BC018667 |
| Swissprot | Q15327 |
| Synonyms | ALRP,CARP,C-193,CVARP,MCARP,bA320F15.2 |

Product Information

| | |
|----------------------|---|
| Calculated MW | 36kDa |
| Buffer | PBS with 0.05% sodium azide and 50% glycerol, PH7.4 |
| Purify | Affinity purification |
| Dilution | WB 1:500-1:2000 |

Background

The protein encoded by this gene is localized to the nucleus of endothelial cells and is induced by IL-1 and TNF-alpha stimulation. Studies in rat cardiomyocytes suggest that this gene functions as a transcription factor. Interactions between this protein and the sarcomeric proteins myopalladin and titin suggest that it may also be involved in the myofibrillar stretch-sensor system.

For Research Use Only

Thank you for your recent purchase.

If you would like to learn more about antibodies, please visit www.elabscience.com.

**Focus on your research
 Service for life science**

Applications:WB-Western Blot IHC-Immunohistochemistry IF-Immunofluorescence IP-Immunoprecipitation FC-Flow cytometry ChIP-Chromatin Immunoprecipitation Reactivity: H-Human R-Rat M-Mouse Mk-Monkey Dg-Dog Ch-Chicken Hm-Hamster Rb-Rabbit Sh-Sheep Pg-Pig Z-Zebrafish X-Xenopus C-Cow.