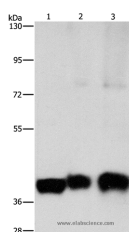


ASAH1 Polyclonal Antibody

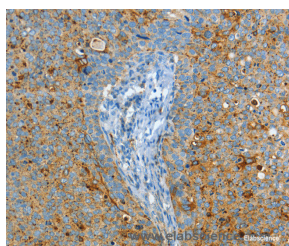
Catalog No.	E-AB-10959	Reactivity	H,M,R
Storage	Store at -20°C. Avoid freeze / thaw cycles.	Host	Rabbit
Applications	WB,IHC,ELISA	Isotype	IgG

Note: Centrifuge before opening to ensure complete recovery of vial contents.

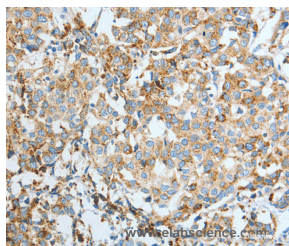
Images



Western Blot analysis of Human lung cancer tissue, Human fetal brain and fetal lung tissue using ASAH1 Polyclonal Antibody at dilution of 1:850



Immunohistochemistry of paraffin-embedded Human cervical cancer using ASAH1 Polyclonal Antibody at dilution of 1:50



Immunohistochemistry of paraffin-embedded Human breast cancer using ASAH1 Polyclonal Antibody at dilution of 1:50

Immunogen Information

Immunogen	Recombinant protein of human ASAH1
Gene Accession	BC016828
Swissprot	Q13510
Synonyms	AC,PHP,ASAH,PHP32,ACDase,SMAPME

Product Information

Calculated MW	45kDa
Buffer	PBS with 0.05% sodium azide and 50% glycerol, PH7.4
Purify	Affinity purification
Dilution	WB 1:1000-1:5000, IHC 1:50-1:200

Background

This gene encodes a heterodimeric protein consisting of a nonglycosylated alpha subunit and a glycosylated beta subunit that is cleaved to the mature enzyme posttranslationally. The encoded protein catalyzes the synthesis and degradation of ceramide into sphingosine and fatty acid. Mutations in this gene have been associated with a lysosomal storage disorder known as Farber disease. Multiple transcript variants encoding several distinct isoforms have been identified for this gene.

For Research Use Only

Thank you for your recent purchase.
 If you would like to learn more about antibodies, please visit www.elabscience.com.

Focus on your research
Service for life science

Applications:WB-Western Blot IHC-Immunohistochemistry IF-Immunofluorescence IP-Immunoprecipitation FC-Flow cytometry ChIP-Chromatin Immunoprecipitation Reactivity: H-Human R-Rat M-Mouse Mk-Monkey Dg-Dog Ch-Chicken Hm-Hamster Rb-Rabbit Sh-Sheep Pg-Pig Z-Zebrafish X-Xenopus C-Cow.