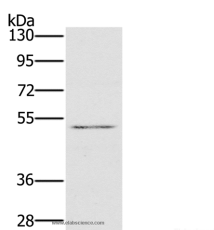


HTR3C Polyclonal Antibody

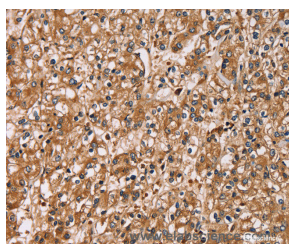
Catalog No.	E-AB-10968	Reactivity	H
Storage	Store at -20°C. Avoid freeze / thaw cycles.	Host	Rabbit
Applications	WB,IHC,ELISA	Isotype	IgG

Note: Centrifuge before opening to ensure complete recovery of vial contents.

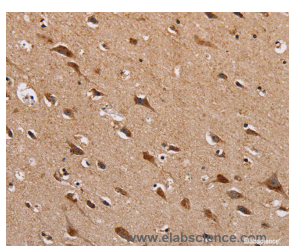
Images



Western Blot analysis of HT-29 cell using HTR3C Polyclonal Antibody at dilution of 1:500



Immunohistochemistry of paraffin-embedded Human prostate cancer using HTR3C Polyclonal Antibody at dilution of 1:30



Immunohistochemistry of paraffin-embedded Human brain using HTR3C Polyclonal Antibody at dilution of 1:30

Immunogen Information

Immunogen	Recombinant protein of human HTR3C
Gene Accession	BC131799
Swissprot	Q8WXA8
Synonyms	5 hydroxytryptamine receptor 3 subunit C,5 hydroxytryptamine receptor 3C,Serotonin receptor 3C

Product Information

Calculated MW	50kDa
Buffer	PBS with 0.05% sodium azide and 50% glycerol, PH7.4
Purify	Affinity purification
Dilution	WB 1:200-1:1000, IHC 1:50-1:200

Background

The product of this gene belongs to the ligand-gated ion channel receptor superfamily. This gene encodes subunit C of the type 3 receptor for 5-hydroxytryptamine (serotonin), a biogenic hormone that functions as a neurotransmitter, a hormone, and a mitogen. This receptor causes fast, depolarizing responses in neurons after activation. Genes encoding subunits C, D and E form a cluster on chromosome 3.

For Research Use Only

Thank you for your recent purchase.
 If you would like to learn more about antibodies, please visit www.elabscience.com.

Focus on your research
Service for life science

Applications:WB-Western Blot IHC-Immunohistochemistry IF-Immunofluorescence IP-Immunoprecipitation FC-Flow cytometry ChIP-Chromatin Immunoprecipitation Reactivity: H-Human R-Rat M-Mouse Mk-Monkey Dg-Dog Ch-Chicken Hm-Hamster Rb-Rabbit Sh-Sheep Pg-Pig Z-Zebrafish X-Xenopus C-Cow.