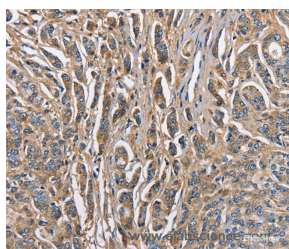


ABI3BP Polyclonal Antibody

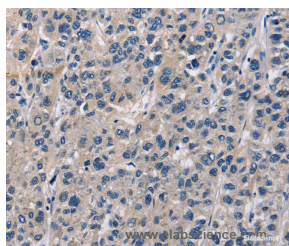
Catalog No.	E-AB-10970	Reactivity	H
Storage	Store at -20°C. Avoid freeze / thaw cycles.	Host	Rabbit
Applications	IHC,ELISA	Isotype	IgG

Note: Centrifuge before opening to ensure complete recovery of vial contents.

Images



Immunohistochemistry of paraffin-embedded Human prostate cancer tissue using ABI3BP Polyclonal Antibody at dilution 1:60



Immunohistochemistry of paraffin-embedded Human liver cancer tissue using ABI3BP Polyclonal Antibody at dilution 1:60

Immunogen Information

Immunogen	Recombinant protein of human ABI3BP
Gene Accession	BC030221
Swissprot	Q7Z7G0
Synonyms	TARSH,NESHBP

Product Information

Buffer	PBS with 0.05% sodium azide and 50% glycerol, PH7.4
Purify	Affinity purification
Dilution	IHC 1:50-1:200

Background

A target of NESH-SH3/Abi3bp (TARSH) was originally identified as an SH3 domain-binding molecule of the NESH-SH3/Abi3 protein that is involved in Rac-dependent actin polymerization. In recent studies, TARSH gene expression was dramatically induced in mouse embryonic fibroblasts (MEFs) replicative senescence and suppressed in human lung carcinoma specimens and thyroid carcinomas. However, the molecular mechanism underlying the regulation of TARSH in tumorigenesis remains unclear.

For Research Use Only

Thank you for your recent purchase.
 If you would like to learn more about antibodies, please visit www.elabscience.com.

**Focus on your research
 Service for life science**

Applications:WB-Western Blot IHC-Immunohistochemistry IF-Immunofluorescence IP-Immunoprecipitation FC-Flow cytometry ChIP-Chromatin Immunoprecipitation Reactivity: H-Human R-Rat M-Mouse Mk-Monkey Dg-Dog Ch-Chicken Hm-Hamster Rb-Rabbit Sh-Sheep Pg-Pig Z-Zebrafish X-Xenopus C-Cow.