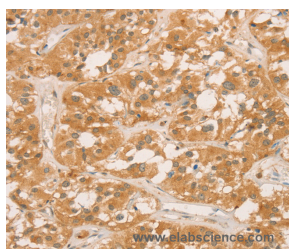


## CPB1 Polyclonal Antibody

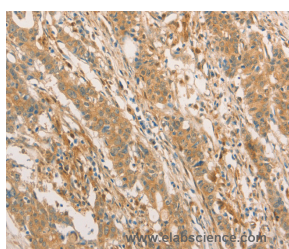
<b>Catalog No.</b>	E-AB-11098	<b>Reactivity</b>	H,R
<b>Storage</b>	Store at -20°C. Avoid freeze / thaw cycles.	<b>Host</b>	Rabbit
<b>Applications</b>	IHC,ELISA	<b>Isotype</b>	IgG

**Note:** Centrifuge before opening to ensure complete recovery of vial contents.

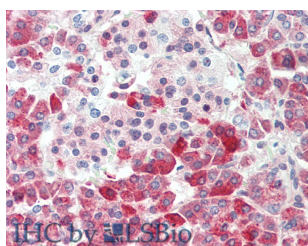
### Images



Immunohistochemistry of paraffin-embedded Human thyroid cancer tissue using CPB1 Polyclonal Antibody at dilution of 1:60



Immunohistochemistry of paraffin-embedded Human gastric cancer using CPB1 Polyclonal Antibody at dilution of 1:60



Immunohistochemistry of paraffin-embedded Human gastric cancer using CPB1 Polyclonal Antibody at dilution of 1:60(Elabscience® Product Detected by Lifespan).

### Immunogen Information

<b>Immunogen</b>	Recombinant protein of human CPB1
<b>Gene Accession</b>	BC015338
<b>Swissprot</b>	P15086
<b>Synonyms</b>	CPB,PASP,PCPB

### Product Information

<b>Buffer</b>	PBS with 0.05% sodium azide and 50% glycerol, PH7.4
<b>Purify</b>	Affinity purification
<b>Dilution</b>	IHC 1:100-1:300

### Background

Three different procarboxypeptidases A and two different procarboxypeptidases B have been isolated. The B1 and B2 forms differ from each other mainly in isoelectric point. Carboxypeptidase B1 is a highly tissue-specific protein and is a useful serum marker for acute pancreatitis and dysfunction of pancreatic transplants. It is not elevated in pancreatic carcinoma.

#### For Research Use Only

Thank you for your recent purchase.  
 If you would like to learn more about antibodies, please visit [www.elabscience.com](http://www.elabscience.com).

**Focus on your research  
 Service for life science**

Applications:WB-Western Blot IHC-Immunohistochemistry IF-Immunofluorescence IP-Immunoprecipitation FC-Flow cytometry ChIP-Chromatin Immunoprecipitation Reactivity: H-Human R-Rat M-Mouse Mk-Monkey Dg-Dog Ch-Chicken Hm-Hamster Rb-Rabbit Sh-Sheep Pg-Pig Z-Zebrafish X-Xenopus C-Cow.