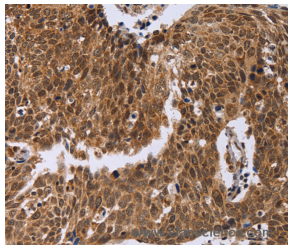


## ERCC6L Polyclonal Antibody

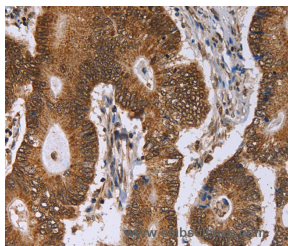
<b>Catalog No.</b>	E-AB-11196	<b>Reactivity</b>	H
<b>Storage</b>	Store at -20°C. Avoid freeze / thaw cycles.	<b>Host</b>	Rabbit
<b>Applications</b>	IHC,ELISA	<b>Isotype</b>	IgG

**Note:** Centrifuge before opening to ensure complete recovery of vial contents.

### Images



Immunohistochemistry of paraffin-embedded Human cervical cancer tissue using ERCC6L Polyclonal Antibody at dilution 1:30



Immunohistochemistry of paraffin-embedded Human colon cancer tissue using ERCC6L Polyclonal Antibody at dilution 1:30

### Immunogen Information

<b>Immunogen</b>	Recombinant protein of human ERCC6L
<b>Gene Accession</b>	BC008808
<b>Swissprot</b>	Q2NKX8
<b>Synonyms</b>	PICH,RAD26L

### Product Information

<b>Buffer</b>	PBS with 0.05% sodium azide and 50% glycerol, PH7.4
<b>Purify</b>	Affinity purification
<b>Dilution</b>	IHC 1:50-1:200

### Background

PICH (Plk1-interacting checkpoint helicase), also known as DNA excision repair protein ERCC-6-like (ERCC6L) or tumor antigen BJ-HCC-15, is a 1,250 amino acid protein belonging to the SNF2/RAD54 helicase family. PICH is a DNA helicase and an essential component of the spindle assembly checkpoint. During mitosis, PICH recruits MAD2 to kinetochores and also regulates the tension on centromeric chromatin. PICH is concentrated in between the kinetochores in prometaphase cells, while in metaphase it localizes to the thin threads composed of catenated centromeric DNA that stretch between sister kinetochores. PICH is phosphorylated by Plk, which prevents PICH from associating with chromosome arms and restricts the localization of PICH to the kinetochore-centromere region. PICH/Plk interaction is also required for correct Plk localization to the kinetochore. PICH contains one helicase ATP-binding domain, two TPR repeats and one helicase C-terminal domain.

### For Research Use Only

Thank you for your recent purchase.  
 If you would like to learn more about antibodies, please visit [www.elabscience.com](http://www.elabscience.com).

**Focus on your research  
 Service for life science**

Applications:WB-Western Blot IHC-Immunohistochemistry IF-Immunofluorescence IP-Immunoprecipitation FC-Flow cytometry ChIP-Chromatin Immunoprecipitation Reactivity: H-Human R-Rat M-Mouse Mk-Monkey Dg-Dog Ch-Chicken Hm-Hamster Rb-Rabbit Sh-Sheep Pg-Pig Z-Zebrafish X-Xenopus C-Cow.