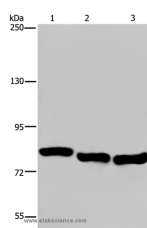


GAB2 Polyclonal Antibody

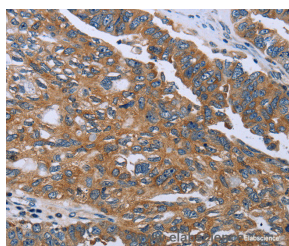
Catalog No.	E-AB-11250	Reactivity	H,M,R
Storage	Store at -20°C. Avoid freeze / thaw cycles.	Host	Rabbit
Applications	WB,IHC,ELISA	Isotype	IgG

Note: Centrifuge before opening to ensure complete recovery of vial contents.

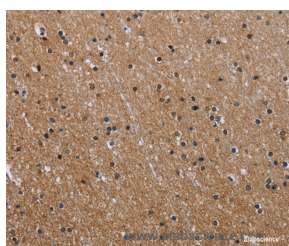
Images



Western Blot analysis of A549, HeLa and K562 cell using GAB2 Polyclonal Antibody at dilution of 1:300



Immunohistochemistry of paraffin-embedded Human ovarian cancer using GAB2 Polyclonal Antibody at dilution of 1:40



Immunohistochemistry of paraffin-embedded Human brain using GAB2 Polyclonal Antibody at dilution of 1:40

Immunogen Information

Immunogen	Recombinant protein of human GAB2
Gene Accession	BC131711
Swissprot	Q9UQC2
Synonyms	GAB 2,Gab2,GAB2,GRB2-associated binder 2,pp100

Product Information

Calculated MW	74kDa
Buffer	PBS with 0.05% sodium azide and 50% glycerol, PH7.4
Purify	Affinity purification
Dilution	WB 1:500-1:2000, IHC 1:50-1:200

Background

This gene is a member of the GRB2-associated binding protein (GAB) gene family. These proteins contain pleckstrin homology (PH) domain, and bind SHP2 tyrosine phosphatase and GRB2 adapter protein. They act as adapters for transmitting various signals in response to stimuli through cytokine and growth factor receptors, and T- and B-cell antigen receptors. The protein encoded by this gene is the principal activator of phosphatidylinositol-3 kinase in response to activation of the high affinity IgE receptor. Two alternatively spliced transcripts encoding different isoforms have been described for this gene.

For Research Use Only

Thank you for your recent purchase.
 If you would like to learn more about antibodies, please visit www.elabscience.com.

**Focus on your research
 Service for life science**

Applications:WB-Western Blot IHC-Immunohistochemistry IF-Immunofluorescence IP-Immunoprecipitation FC-Flow cytometry ChIP-Chromatin Immunoprecipitation Reactivity: H-Human R-Rat M-Mouse Mk-Monkey Dg-Dog Ch-Chicken Hm-Hamster Rb-Rabbit Sh-Sheep Pg-Pig Z-Zebrafish X-Xenopus C-Cow.