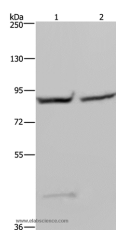


## GYS1 Polyclonal Antibody

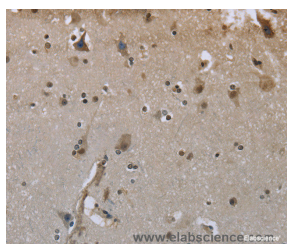
<b>Catalog No.</b>	E-AB-11275	<b>Reactivity</b>	H,M,R
<b>Storage</b>	Store at -20°C. Avoid freeze / thaw cycles.	<b>Host</b>	Rabbit
<b>Applications</b>	WB,IHC,ELISA	<b>Isotype</b>	IgG

**Note:** Centrifuge before opening to ensure complete recovery of vial contents.

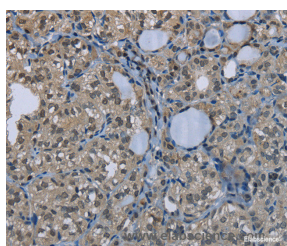
### Images



Western Blot analysis of 293T and Hela cell using GYS1 Polyclonal Antibody at dilution of 1:400



Immunohistochemistry of paraffin-embedded Human brain using GYS1 Polyclonal Antibody at dilution of 1:50



Immunohistochemistry of paraffin-embedded Human thyroid cancer using GYS1 Polyclonal Antibody at dilution of 1:50

### Immunogen Information

<b>Immunogen</b>	Recombinant protein of human GYS1
<b>Gene Accession</b>	BC002617
<b>Swissprot</b>	P13807
<b>Synonyms</b>	GSY,GYS

### Product Information

<b>Calculated MW</b>	84kDa
<b>Buffer</b>	PBS with 0.05% sodium azide and 50% glycerol, PH7.4
<b>Purify</b>	Affinity purification
<b>Dilution</b>	WB 1:200-1:1000, IHC 1:50-1:200

### Background

The protein encoded by this gene catalyzes the addition of glucose monomers to the growing glycogen molecule through the formation of alpha-1,4-glycoside linkages. Mutations in this gene are associated with muscle glycogen storage disease. Alternatively spliced transcript variants encoding different isoforms have been found for this gene.

#### For Research Use Only

Thank you for your recent purchase.  
 If you would like to learn more about antibodies, please visit [www.elabscience.com](http://www.elabscience.com).

**Focus on your research**  
**Service for life science**

Applications:WB-Western Blot IHC-Immunohistochemistry IF-Immunofluorescence IP-Immunoprecipitation FC-Flow cytometry ChIP-Chromatin Immunoprecipitation Reactivity: H-Human R-Rat M-Mouse Mk-Monkey Dg-Dog Ch-Chicken Hm-Hamster Rb-Rabbit Sh-Sheep Pg-Pig Z-Zebrafish X-Xenopus C-Cow.