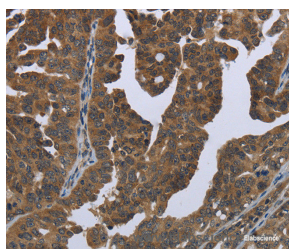


GYS2 Polyclonal Antibody

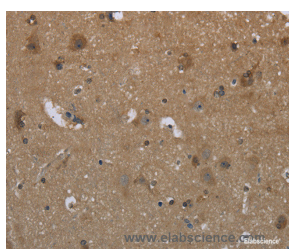
Catalog No.	E-AB-11276	Reactivity	H,M,R
Storage	Store at -20°C. Avoid freeze / thaw cycles.	Host	Rabbit
Applications	IHC,ELISA	Isotype	IgG

Note: Centrifuge before opening to ensure complete recovery of vial contents.

Images



Immunohistochemistry of paraffin-embedded Human ovarian cancer tissue using GYS2 Polyclonal Antibody at dilution 1:50



Immunohistochemistry of paraffin-embedded Human brain tissue using GYS2 Polyclonal Antibody at dilution 1:50

Immunogen Information

Immunogen	Recombinant protein of human GYS2
Gene Accession	BC126310
Swissprot	P54840
Synonyms	EC 2.4.1.11,Glycogen starch synthase liver,Gys2,GYS2,liver

Product Information

Buffer	PBS with 0.05% sodium azide and 50% glycerol, PH7.4
Purify	Affinity purification
Dilution	IHC 1:100-1:300

Background

The protein encoded by this gene, liver glycogen synthase, catalyzes the rate-limiting step in the synthesis of glycogen - the transfer of a glucose molecule from UDP-glucose to a terminal branch of the glycogen molecule. Mutations in this gene cause glycogen storage disease type 0 (GSD-0) - a rare type of early childhood fasting hypoglycemia with decreased liver glycogen content.

For Research Use Only

Thank you for your recent purchase.
 If you would like to learn more about antibodies, please visit www.elabscience.com.

**Focus on your research
 Service for life science**

Applications:WB-Western Blot IHC-Immunohistochemistry IF-Immunofluorescence IP-Immunoprecipitation FC-Flow cytometry ChIP-Chromatin Immunoprecipitation Reactivity: H-Human R-Rat M-Mouse Mk-Monkey Dg-Dog Ch-Chicken Hm-Hamster Rb-Rabbit Sh-Sheep Pg-Pig Z-Zebrafish X-Xenopus C-Cow.