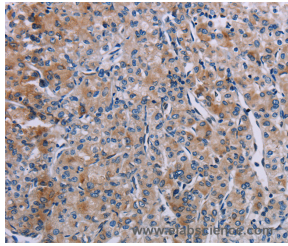


KDM4D Polyclonal Antibody

Catalog No.	E-AB-11341	Reactivity	H,M,R
Storage	Store at -20°C. Avoid freeze / thaw cycles.	Host	Rabbit
Applications	IHC,ELISA	Isotype	IgG

Note: Centrifuge before opening to ensure complete recovery of vial contents.

Images



Immunohistochemistry of paraffin-embedded Human prostate cancer tissue using KDM4D Polyclonal Antibody at dilution 1:60

Immunogen Information

Immunogen	Recombinant protein of human KDM4D
Gene Accession	BC122858
Swissprot	Q6B0I6
Synonyms	JMJD2D

Product Information

Buffer	PBS with 0.05% sodium azide and 50% glycerol, PH7.4
Purify	Affinity purification
Dilution	IHC 1:25-1:100

Background

JMJD2D (Jumonji domain-containing protein 2D), also known as JHDM3D or KDM4D, is a 520 amino acid protein that belongs to the JHDM3 histone demethylase family. Localized to the nucleus, JMJD2D functions as a histone demethylase that removes specific methyl residues from Histone H3, thereby playing a crucial role in the histone code. JMJD2D binds iron as a cofactor and contains one JMJC domain and one JMJD domain, both of which are thought to exhibit enzymatic activity during chromatin remodeling events. In addition, JMJD2D forms a complex with the ligand-bound form of the androgen receptor (AR) and, through this interaction, activates AR expression. Overexpression of AR is associated with prostate cancer, suggesting that, via its ability to upregulate AR, JMJD2D may be involved in carcinogenesis.

For Research Use Only

Thank you for your recent purchase.

If you would like to learn more about antibodies, please visit www.elabscience.com.

**Focus on your research
Service for life science**

Applications:WB-Western Blot IHC-Immunohistochemistry IF-Immunofluorescence IP-Immunoprecipitation FC-Flow cytometry ChIP-Chromatin Immunoprecipitation Reactivity: H-Human R-Rat M-Mouse Mk-Monkey Dg-Dog Ch-Chicken Hm-Hamster Rb-Rabbit Sh-Sheep Pg-Pig Z-Zebrafish X-Xenopus C-Cow.