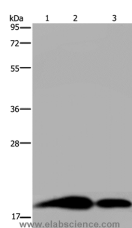


REG3G Polyclonal Antibody

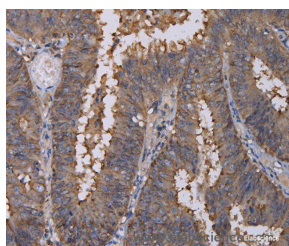
Catalog No.	E-AB-11393	Reactivity	H,M
Storage	Store at -20°C. Avoid freeze / thaw cycles.	Host	Rabbit
Applications	WB,IHC,ELISA	Isotype	IgG

Note: Centrifuge before opening to ensure complete recovery of vial contents.

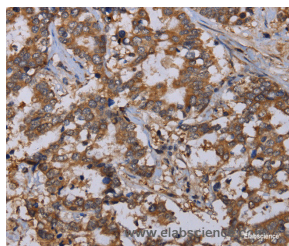
Images



Western Blot analysis of Human brain malignant glioma, Mouse kidney and Human kidney tissue using REG3G Polyclonal Antibody at dilution of 1:250



Immunohistochemistry of paraffin-embedded Human colon cancer using REG3G Polyclonal Antibody at dilution of 1:40



Immunohistochemistry of paraffin-embedded Human liver cancer using REG3G Polyclonal Antibody at dilution of 1:40

Immunogen Information

Immunogen	Recombinant protein of human REG3G
Gene Accession	BC103854
Swissprot	Q6UW15
Synonyms	PAP1B,PAPIB,PAP IB,PAP-1B,UNQ429,LPPM429,REG III,REG-III

Product Information

Calculated MW	19kDa
Buffer	PBS with 0.05% sodium azide and 50% glycerol, PH7.4
Purify	Affinity purification
Dilution	WB 1:500-1:2000, IHC 1:50-1:200

Background

This gene encodes a member of the regenerating islet-derived genes (REG)3 protein family. These proteins are secreted, C-type lectins with a carbohydrate recognition domain and N-terminal signal peptide. The protein encoded by this gene is an antibacterial lectin with activity against Gram-positive bacteria. Alternative splicing results in multiple transcript variants encoding multiple isoforms.

For Research Use Only

Thank you for your recent purchase.
 If you would like to learn more about antibodies, please visit www.elabscience.com.

**Focus on your research
 Service for life science**

Applications:WB-Western Blot IHC-Immunohistochemistry IF-Immunofluorescence IP-Immunoprecipitation FC-Flow cytometry ChIP-Chromatin Immunoprecipitation Reactivity: H-Human R-Rat M-Mouse Mk-Monkey Dg-Dog Ch-Chicken Hm-Hamster Rb-Rabbit Sh-Sheep Pg-Pig Z-Zebrafish X-Xenopus C-Cow.