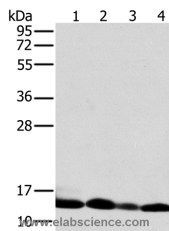


## NDUFS5 Polyclonal Antibody

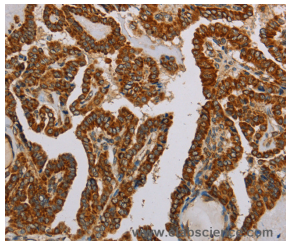
<b>Catalog No.</b>	E-AB-11430	<b>Reactivity</b>	H
<b>Storage</b>	Store at -20°C. Avoid freeze / thaw cycles.	<b>Host</b>	Rabbit
<b>Applications</b>	WB,IHC,ELISA	<b>Isotype</b>	IgG

**Note:** Centrifuge before opening to ensure complete recovery of vial contents.

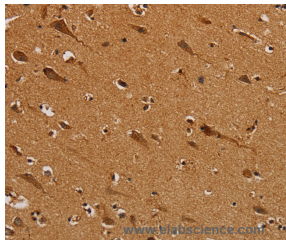
### Images



Western Blot analysis of Human liver tissue and K562 cell, Human fetal brain tissue and Raji cell using NDUFS5 Polyclonal Antibody at dilution of 1:400



Immunohistochemistry of paraffin-embedded Human thyroid cancer using NDUFS5 Polyclonal Antibody at dilution of 1:50



Immunohistochemistry of paraffin-embedded Human brain using NDUFS5 Polyclonal Antibody at dilution of 1:50

### Immunogen Information

<b>Immunogen</b>	Recombinant protein of human NDUFS5
<b>Gene Accession</b>	BC001884
<b>Swissprot</b>	O43920
<b>Synonyms</b>	CI15K,CI-15k

### Product Information

<b>Calculated MW</b>	13kDa
<b>Buffer</b>	PBS with 0.05% sodium azide and 50% glycerol, PH7.4
<b>Purify</b>	Affinity purification
<b>Dilution</b>	WB 1:500-1:2000, IHC 1:50-1:200

### Background

This gene is a member of the NADH dehydrogenase (ubiquinone) iron-sulfur protein family. The encoded protein is a subunit of the NADH:ubiquinone oxidoreductase (complex I), the first enzyme complex in the electron transport chain located in the inner mitochondrial membrane. Alternative splicing results in multiple transcript variants and pseudogenes have been identified on chromosomes 1, 4 and 17.

### For Research Use Only

Thank you for your recent purchase.  
 If you would like to learn more about antibodies, please visit [www.elabscience.com](http://www.elabscience.com).

**Focus on your research  
 Service for life science**

Applications:WB-Western Blot IHC-Immunohistochemistry IF-Immunofluorescence IP-Immunoprecipitation FC-Flow cytometry ChIP-Chromatin Immunoprecipitation Reactivity: H-Human R-Rat M-Mouse Mk-Monkey Dg-Dog Ch-Chicken Hm-Hamster Rb-Rabbit Sh-Sheep Pg-Pig Z-Zebrafish X-Xenopus C-Cow.