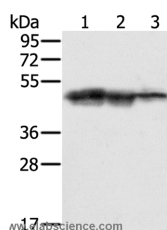


SMARCB1 Polyclonal Antibody

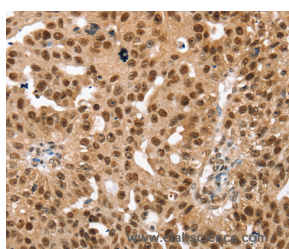
Catalog No.	E-AB-11593	Reactivity	H,M
Storage	Store at -20°C. Avoid freeze / thaw cycles.	Host	Rabbit
Applications	WB,IHC,ELISA	Isotype	IgG

Note: Centrifuge before opening to ensure complete recovery of vial contents.

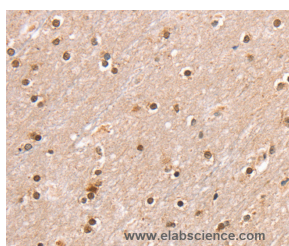
Images



Western Blot analysis of Hepg2, K562 and Jurkat cell using SMARCB1 Polyclonal Antibody at dilution of 1:400



Immunohistochemistry of paraffin-embedded Human breast cancer using SMARCB1 Polyclonal Antibody at dilution of 1:30



Immunohistochemistry of paraffin-embedded Human brain using SMARCB1 Polyclonal Antibody at dilution of 1:30

Immunogen Information

Immunogen	Recombinant protein of human SMARCB1
Gene Accession	BC117114
Swissprot	Q12824
Synonyms	RDT,INI1,SNF5,Snr1,BAF47,MRD15,RTPS1,Sfh1p,hSNFS,SNF5L1,SWNTS1,PPP1R144

Product Information

Calculated MW	44kDa
Buffer	PBS with 0.05% sodium azide and 50% glycerol, PH7.4
Purify	Affinity purification
Dilution	WB 1:500-1:2000, IHC 1:25-1:100

Background

The protein encoded by this gene is part of a complex that relieves repressive chromatin structures, allowing the transcriptional machinery to access its targets more effectively. The encoded nuclear protein may also bind to and enhance the DNA joining activity of HIV-1 integrase. This gene has been found to be a tumor suppressor, and mutations in it have been associated with Human, Mouse malignant rhabdoid tumors. Two transcript variants encoding different isoforms have been found for this gene.

For Research Use Only

Thank you for your recent purchase.
 If you would like to learn more about antibodies, please visit www.elabscience.com.

**Focus on your research
 Service for life science**

Applications:WB-Western Blot IHC-Immunohistochemistry IF-Immunofluorescence IP-Immunoprecipitation FC-Flow cytometry ChIP-Chromatin Immunoprecipitation Reactivity: H-Human R-Rat M-Mouse Mk-Monkey Dg-Dog Ch-Chicken Hm-Hamster Rb-Rabbit Sh-Sheep Pg-Pig Z-Zebrafish X-Xenopus C-Cow.