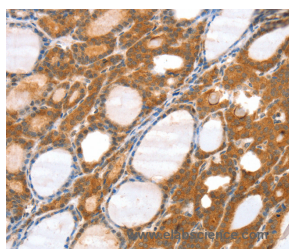


SRGAP3 Polyclonal Antibody

Catalog No.	E-AB-11600	Reactivity	H,M
Storage	Store at -20°C. Avoid freeze / thaw cycles.	Host	Rabbit
Applications	IHC,ELISA	Isotype	IgG

Note: Centrifuge before opening to ensure complete recovery of vial contents.

Images



Immunohistochemistry of paraffin-embedded Human thyroid cancer tissue using SRGAP3 Polyclonal Antibody at dilution 1:40

Immunogen Information

Immunogen	Recombinant protein of human SRGAP3
Gene Accession	BC039300
Swissprot	O43295
Synonyms	WRP,MEGAP,SRGAP2,ARHGAP14

Product Information

Buffer	PBS with 0.05% sodium azide and 50% glycerol, PH7.4
Purify	Affinity purification
Dilution	IHC 1:25-1:100

Background

SRGAP3 is a 1099 amino acid protein containing 1 FCH domain, 1 Rho-GAP domain and 1 SH3 domain. Expressed highly in brain, and in lower levels in kidney, WRP is thought to play a role in cell migration through its interaction with Cdc42 and Rac1. Cdc42 and Rac1 are two intracellular signaling proteins that regulate the multistep cell migration process. WRP downregulates Cdc42 and Rac1 activity, thereby impairing actin and microtubule dynamics, the formation of protrusions, and total cell migration. Defects in the gene encoding WRP have been linked to severe idiopathic mental retardation. Three isoforms of WRP exist as a result of alternative splicing events.

For Research Use Only

Thank you for your recent purchase.
 If you would like to learn more about antibodies, please visit www.elabscience.com.

**Focus on your research
 Service for life science**

Applications:WB-Western Blot IHC-Immunohistochemistry IF-Immunofluorescence IP-Immunoprecipitation FC-Flow cytometry ChIP-Chromatin Immunoprecipitation Reactivity: H-Human R-Rat M-Mouse Mk-Monkey Dg-Dog Ch-Chicken Hm-Hamster Rb-Rabbit Sh-Sheep Pg-Pig Z-Zebrafish X-Xenopus C-Cow.