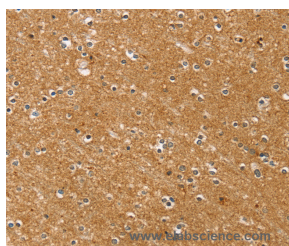


SYTL5 Polyclonal Antibody

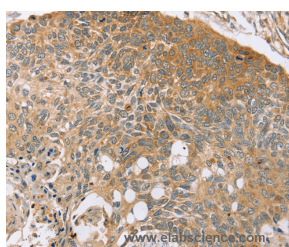
Catalog No.	E-AB-11619	Reactivity	H,M,R
Storage	Store at -20°C. Avoid freeze / thaw cycles.	Host	Rabbit
Applications	IHC,ELISA	Isotype	IgG

Note: Centrifuge before opening to ensure complete recovery of vial contents.

Images



Immunohistochemistry of paraffin-embedded Human brain tissue using SYTL5 Polyclonal Antibody at dilution 1:50



Immunohistochemistry of paraffin-embedded Human esophagus cancer tissue using SYTL5 Polyclonal Antibody at dilution 1:50

Immunogen Information

Immunogen	Recombinant protein of human SYTL5
Gene Accession	BC131585
Swissprot	Q8TDW5
Synonyms	slp5

Product Information

Buffer	PBS with 0.05% sodium azide and 50% glycerol, PH7.4
Purify	Affinity purification
Dilution	IHC 1:25-1:100

Background

The protein encoded by this gene belongs to the synaptotagmin-like (Slp) protein family, which contains a unique homology domain at the N-terminus, referred to as the Slp homology domain (SHD). The SHD functions as a binding site for Rab27A, which plays a role in protein transport. Expression of this gene is restricted to placenta and liver, suggesting that it might be involved in Rab27A-dependent membrane trafficking in specific tissues.

For Research Use Only

Thank you for your recent purchase.
 If you would like to learn more about antibodies, please visit www.elabscience.com.

**Focus on your research
 Service for life science**

Applications:WB-Western Blot IHC-Immunohistochemistry IF-Immunofluorescence IP-Immunoprecipitation FC-Flow cytometry ChIP-Chromatin Immunoprecipitation Reactivity: H-Human R-Rat M-Mouse Mk-Monkey Dg-Dog Ch-Chicken Hm-Hamster Rb-Rabbit Sh-Sheep Pg-Pig Z-Zebrafish X-Xenopus C-Cow.