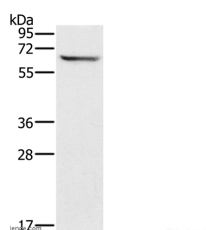


CRMP1 Polyclonal Antibody

Catalog No.	E-AB-12333	Reactivity	H,M,R
Storage	Store at -20°C. Avoid freeze / thaw cycles.	Host	Rabbit
Applications	WB,ELISA	Isotype	IgG

Note: Centrifuge before opening to ensure complete recovery of vial contents.

Images



Western Blot analysis of Mouse brain tissue using CRMP1 Polyclonal Antibody at dilution of 1:500

Immunogen Information

Immunogen	Synthetic peptide of human CRMP1
Gene Accession	NP_001304
Swissprot	Q14194
Synonyms	DRP1,DRP-1,CRMP-1,DPYSL1,ULIP-3

Product Information

Calculated MW	62kDa
Buffer	PBS with 0.05% sodium azide and 50% glycerol, PH7.4
Purify	Affinity purification
Dilution	WB 1:500-1:1000

Background

Collapsin response mediator protein 1, encoded by the CRMP1 gene, is a human protein of the CRMP family. This gene encodes a member of a family of cytosolic phosphoproteins expressed exclusively in the nervous system. The encoded protein is thought to be a part of the semaphorin signal transduction pathway implicated in semaphorin-induced growth cone collapse during neural development. Alternative splicing results in multiple transcript variants. CRMP1 mediates reelin signaling in cortical neuronal migration. Mice deficient in CRMP1 exhibit impaired long-term potentiation and impaired spatial learning and memory. CRMP1 gene overlaps with another gene called EVC. CRMP1 has been shown to interact with DPYSL2.

For Research Use Only

Thank you for your recent purchase.
 If you would like to learn more about antibodies, please visit www.elabscience.com.

**Focus on your research
 Service for life science**

Applications:WB-Western Blot IHC-Immunohistochemistry IF-Immunofluorescence IP-Immunoprecipitation FC-Flow cytometry ChIP-Chromatin Immunoprecipitation Reactivity: H-Human R-Rat M-Mouse Mk-Monkey Dg-Dog Ch-Chicken Hm-Hamster Rb-Rabbit Sh-Sheep Pg-Pig Z-Zebrafish X-Xenopus C-Cow.