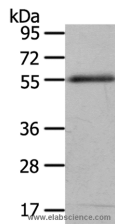


ENPP7 Polyclonal Antibody

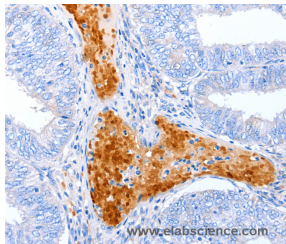
Catalog No.	E-AB-12390	Reactivity	H,R
Storage	Store at -20°C. Avoid freeze / thaw cycles.	Host	Rabbit
Applications	WB,IHC,ELISA	Isotype	IgG

Note: Centrifuge before opening to ensure complete recovery of vial contents.

Images



Western Blot analysis of 293T cell using ENPP7 Polyclonal Antibody at dilution of 1:700



Immunohistochemistry of paraffin-embedded Human cervical cancer using ENPP7 Polyclonal Antibody at dilution of 1:50

Immunogen Information

Immunogen	Synthetic peptide of human ENPP7
Gene Accession	NP_848638
Swissprot	Q6UWV6
Synonyms	ALK-SMase

Product Information

Calculated MW	52kDa
Buffer	PBS with 0.05% sodium azide and 50% glycerol, PH7.4
Purify	Affinity purification
Dilution	WB 1:500-1:2000, IHC 1:50-1:200

Background

Ectonucleotide pyrophosphatase/phosphodiesterase family member 7 (ENPP 7) also known as alkaline sphingomyelin phosphodiesterase (Alk-SMase) or intestinal alkaline sphingomyelinase is an enzyme that in humans is encoded by the ENPP7 gene. Converts sphingomyelin to ceramide. Also has phospholipase C activity toward palmitoyl lysophosphocholine. Does not appear to have nucleotide pyrophosphatase activity. Inhibited in a dose dependent manner by ATP, imidazole, orthovanadate and zinc ion. Not inhibited by ADP, AMP and EDTA. Detected in the colon (at protein level). Expressed in the duodenum, jejunum and liver and at low levels in the ileum. Expression was very low in the esophagus, stomach and colon.

For Research Use Only

Thank you for your recent purchase.
 If you would like to learn more about antibodies, please visit www.elabscience.com.

**Focus on your research
 Service for life science**

Applications:WB-Western Blot IHC-Immunohistochemistry IF-Immunofluorescence IP-Immunoprecipitation FC-Flow cytometry ChIP-Chromatin Immunoprecipitation Reactivity: H-Human R-Rat M-Mouse Mk-Monkey Dg-Dog Ch-Chicken Hm-Hamster Rb-Rabbit Sh-Sheep Pg-Pig Z-Zebrafish X-Xenopus C-Cow.