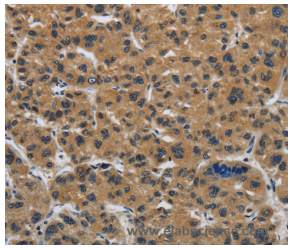


Claudin 2 Polyclonal Antibody

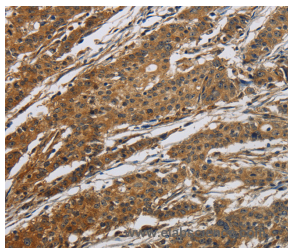
Catalog No.	E-AB-12456	Reactivity	H
Storage	Store at -20°C. Avoid freeze / thaw cycles.	Host	Rabbit
Applications	IHC,ELISA	Isotype	IgG

Note: Centrifuge before opening to ensure complete recovery of vial contents.

Images



Immunohistochemistry of paraffin-embedded Human liver cancer tissue using Claudin 2 Polyclonal Antibody at dilution 1:50



Immunohistochemistry of paraffin-embedded Human gastric cancer tissue using Claudin 2 Polyclonal Antibody at dilution 1:50

Immunogen Information

Immunogen	Synthetic peptide of human CLDN2
Gene Accession	NP_065117
Swissprot	P57739
Synonyms	Claudin-2,Claudin2,CLD2,CLDN2,CLDN2,OTTHUMP00000023793,SP 82,SP82

Product Information

Buffer	PBS with 0.05% sodium azide and 50% glycerol, PH7.4
Purify	Affinity purification
Dilution	IHC 1:50-1:200

Background

This gene product belongs to the claudin protein family whose members have been identified as major integral membrane proteins localized exclusively at tight junctions. Claudins are expressed in an organ-specific manner and regulate tissue-specific physiologic properties of tight junctions. This protein is expressed in the intestine. Alternatively spliced transcript variants with different 5' untranslated region have been found for this gene.

For Research Use Only

Thank you for your recent purchase.

If you would like to learn more about antibodies, please visit www.elabscience.com.

**Focus on your research
Service for life science**

Applications:WB-Western Blot IHC-Immunohistochemistry IF-Immunofluorescence IP-Immunoprecipitation FC-Flow cytometry ChIP-Chromatin Immunoprecipitation Reactivity: H-Human R-Rat M-Mouse Mk-Monkey Dg-Dog Ch-Chicken Hm-Hamster Rb-Rabbit Sh-Sheep Pg-Pig Z-Zebrafish X-Xenopus C-Cow.