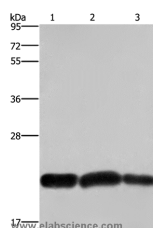


CBX3 Polyclonal Antibody

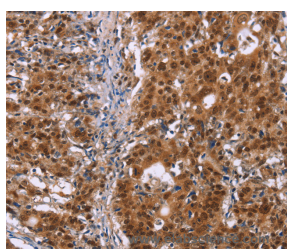
Catalog No.	E-AB-12511	Reactivity	H,M
Storage	Store at -20°C. Avoid freeze / thaw cycles.	Host	Rabbit
Applications	WB,IHC,ELISA	Isotype	IgG

Note: Centrifuge before opening to ensure complete recovery of vial contents.

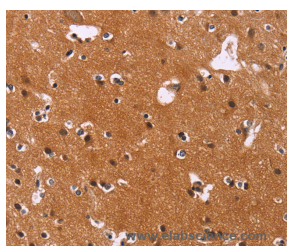
Images



Western Blot analysis of A375 and Raji cell, Human fetal brain tissue using CBX3 Polyclonal Antibody at dilution of 1:600



Immunohistochemistry of paraffin-embedded Human gastric cancer using CBX3 Polyclonal Antibody at dilution of 1:40



Immunohistochemistry of paraffin-embedded Human brain using CBX3 Polyclonal Antibody at dilution of 1:40

Immunogen Information

Immunogen	Synthetic peptide of human CBX3
Gene Accession	NP_009207
Swissprot	Q13185
Synonyms	HECH,HP1-GAMMA,HP1Hs-gamma

Product Information

Calculated MW	21kDa
Buffer	PBS with 0.05% sodium azide and 50% glycerol, PH7.4
Purify	Affinity purification
Dilution	WB 1:500-1:2000, IHC 1:50-1:200

Background

At the nuclear envelope, the nuclear lamina and heterochromatin are adjacent to the inner nuclear membrane. The protein encoded by this gene binds DNA and is a component of heterochromatin. This protein also can bind lamin B receptor, an integral membrane protein found in the inner nuclear membrane. The dual binding functions of the encoded protein may explain the association of heterochromatin with the inner nuclear membrane. This protein binds histone H3 tails methylated at Lys-9 sites. This protein is also recruited to sites of ultraviolet-induced DNA damage and double-strand breaks.

For Research Use Only

Thank you for your recent purchase.
 If you would like to learn more about antibodies, please visit www.elabscience.com.

**Focus on your research
 Service for life science**

Applications:WB-Western Blot IHC-Immunohistochemistry IF-Immunofluorescence IP-Immunoprecipitation FC-Flow cytometry ChIP-Chromatin Immunoprecipitation Reactivity: H-Human R-Rat M-Mouse Mk-Monkey Dg-Dog Ch-Chicken Hm-Hamster Rb-Rabbit Sh-Sheep Pg-Pig Z-Zebrafish X-Xenopus C-Cow.