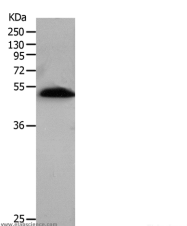


## BPIFB2 Polyclonal Antibody

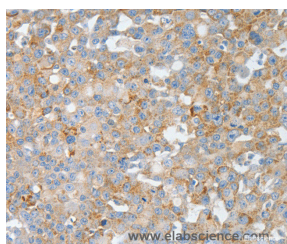
<b>Catalog No.</b>	E-AB-12542	<b>Reactivity</b>	H,M
<b>Storage</b>	Store at -20°C. Avoid freeze / thaw cycles.	<b>Host</b>	Rabbit
<b>Applications</b>	WB,IHC,ELISA	<b>Isotype</b>	IgG

**Note:** Centrifuge before opening to ensure complete recovery of vial contents.

### Images



Western Blot analysis of Human lung tissue using BPIFB2 Polyclonal Antibody at dilution of 1:530



Immunohistochemistry of paraffin-embedded Human breast cancer using BPIFB2 Polyclonal Antibody at dilution of 1:50

### Immunogen Information

<b>Immunogen</b>	Synthetic peptide of human BPIFB2
<b>Gene Accession</b>	NP_079503
<b>Swissprot</b>	Q8N4F0
<b>Synonyms</b>	RYSR,BPIL1,LPLUNC2,C20orf184,dJ726C3.2

### Product Information

<b>Calculated MW</b>	49kDa
<b>Buffer</b>	PBS with 0.05% sodium azide and 50% glycerol, PH7.4
<b>Purify</b>	Affinity purification
<b>Dilution</b>	WB 1:1000-1:5000, IHC 1:25-1:100

### Background

This gene encodes a member of the lipid transfer/lipoplysaccharide binding protein (LT/LBP) gene family. It is highly expressed in hypertrophic tonsils. This gene and three other members of the LT/LBP gene family form a cluster on the long arm of chromosome 20.

#### For Research Use Only

Thank you for your recent purchase.  
 If you would like to learn more about antibodies, please visit [www.elabscience.com](http://www.elabscience.com).

**Focus on your research  
 Service for life science**

Applications:WB-Western Blot IHC-Immunohistochemistry IF-Immunofluorescence IP-Immunoprecipitation FC-Flow cytometry ChIP-Chromatin Immunoprecipitation Reactivity: H-Human R-Rat M-Mouse Mk-Monkey Dg-Dog Ch-Chicken Hm-Hamster Rb-Rabbit Sh-Sheep Pg-Pig Z-Zebrafish X-Xenopus C-Cow.