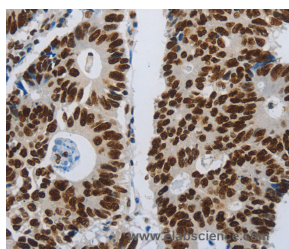


## SLC16A14 Polyclonal Antibody

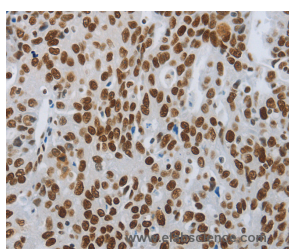
<b>Catalog No.</b>	E-AB-12559	<b>Reactivity</b>	H
<b>Storage</b>	Store at -20°C. Avoid freeze / thaw cycles.	<b>Host</b>	Rabbit
<b>Applications</b>	IHC,ELISA	<b>Isotype</b>	IgG

**Note:** Centrifuge before opening to ensure complete recovery of vial contents.

### Images



Immunohistochemistry of paraffin-embedded Human colon cancer tissue using SLC16A14 Polyclonal Antibody at dilution 1:80



Immunohistochemistry of paraffin-embedded Human ovarian cancer tissue using SLC16A14 Polyclonal Antibody at dilution 1:80

### Immunogen Information

<b>Immunogen</b>	Synthetic peptide of human SLC16A14
<b>Gene Accession</b>	NP_689740
<b>Swissprot</b>	Q7RTX9
<b>Synonyms</b>	MCT14

### Product Information

<b>Buffer</b>	PBS with 0.05% sodium azide and 50% glycerol, PH7.4
<b>Purify</b>	Affinity purification
<b>Dilution</b>	IHC 1:100-1:300

### Background

Proton-linked monocarboxylate transporter. Catalyzes the rapid transport across the plasma membrane of many monocarboxylates

#### For Research Use Only

Thank you for your recent purchase.

If you would like to learn more about antibodies, please visit [www.elabscience.com](http://www.elabscience.com).

**Focus on your research  
Service for life science**

Applications:WB-Western Blot IHC-Immunohistochemistry IF-Immunofluorescence IP-Immunoprecipitation FC-Flow cytometry ChIP-Chromatin Immunoprecipitation Reactivity: H-Human R-Rat M-Mouse Mk-Monkey Dg-Dog Ch-Chicken Hm-Hamster Rb-Rabbit Sh-Sheep Pg-Pig Z-Zebrafish X-Xenopus C-Cow.