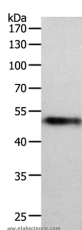


MIDN Polyclonal Antibody

Catalog No.	E-AB-12568	Reactivity	H,M
Storage	Store at -20°C. Avoid freeze / thaw cycles.	Host	Rabbit
Applications	WB,ELISA	Isotype	IgG

Note: Centrifuge before opening to ensure complete recovery of vial contents.

Images



Western Blot analysis of Human lung tissue using MIDN Polyclonal Antibody at dilution of 1:1000

Immunogen Information

Immunogen	Synthetic peptide of human MIDN
Gene Accession	NP_796375
Swissprot	Q504T8
Synonyms	Midbrain nucleolar protein,midn,MIDN,Midnolin

Product Information

Calculated MW	49kDa
Buffer	PBS with 0.05% sodium azide and 50% glycerol, PH7.4
Purify	Affinity purification
Dilution	WB 1:500-1:2000

Background

Expression of the midnolin gene is developmentally regulated: it is strongly expressed at the mesencephalon (midbrain) of the embryo in day 12.5 (E12.5) mice. The midnolin encodes a protein of 508 amino acids (aa), which contains a Ubiquitin-like domain. The intracellular distribution of the midnolin was studied by using midnolin-green fluorescent protein (GFP) fusion proteins. Midnolin was found to be localized in the nucleus and nucleolus, but not in the cytoplasm. The nucleolar localization signal was determined to be a 28aa peptide located at the C-terminal region of the midnolin. May be involved in regulation of genes related to neurogenesis in the nucleolus

For Research Use Only

Thank you for your recent purchase.
 If you would like to learn more about antibodies, please visit www.elabscience.com.

**Focus on your research
 Service for life science**

Applications:WB-Western Blot IHC-Immunohistochemistry IF-Immunofluorescence IP-Immunoprecipitation FC-Flow cytometry ChIP-Chromatin Immunoprecipitation Reactivity: H-Human R-Rat M-Mouse Mk-Monkey Dg-Dog Ch-Chicken Hm-Hamster Rb-Rabbit Sh-Sheep Pg-Pig Z-Zebrafish X-Xenopus C-Cow.