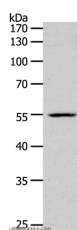


## PAX1 Polyclonal Antibody

<b>Catalog No.</b>	E-AB-12614	<b>Reactivity</b>	H,M
<b>Storage</b>	Store at -20°C. Avoid freeze / thaw cycles.	<b>Host</b>	Rabbit
<b>Applications</b>	WB,ELISA	<b>Isotype</b>	IgG

**Note:** Centrifuge before opening to ensure complete recovery of vial contents.

### Images



Western Blot analysis of K562 cell using PAX1 Polyclonal Antibody at dilution of 1:1200

### Immunogen Information

<b>Immunogen</b>	Synthetic peptide of human PAX1
<b>Gene Accession</b>	NP_006183
<b>Swissprot</b>	P15863
<b>Synonyms</b>	HUP48

### Product Information

<b>Calculated MW</b>	55kDa
<b>Buffer</b>	PBS with 0.05% sodium azide and 50% glycerol, PH7.4
<b>Purify</b>	Affinity purification
<b>Dilution</b>	WB 1:500-1:2000

### Background

This gene is a member of the paired box (PAX) family of transcription factors. Members of the PAX family typically contain a paired box domain and a paired-type homeodomain. These genes play critical roles during fetal development. This gene plays a role in pattern formation during embryogenesis and may be essential for development of the vertebral column. This gene is silenced by methylation in ovarian and cervical cancers and may be a tumor suppressor gene. Mutations in this gene are also associated with vertebral malformations

#### For Research Use Only

Thank you for your recent purchase.

If you would like to learn more about antibodies, please visit [www.elabscience.com](http://www.elabscience.com).

**Focus on your research  
 Service for life science**

Applications:WB-Western Blot IHC-Immunohistochemistry IF-Immunofluorescence IP-Immunoprecipitation FC-Flow cytometry ChIP-Chromatin Immunoprecipitation Reactivity: H-Human R-Rat M-Mouse Mk-Monkey Dg-Dog Ch-Chicken Hm-Hamster Rb-Rabbit Sh-Sheep Pg-Pig Z-Zebrafish X-Xenopus C-Cow.