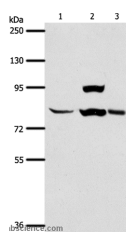


AGAP1 Polyclonal Antibody

Catalog No.	E-AB-12701	Reactivity	H,M
Storage	Store at -20°C. Avoid freeze / thaw cycles.	Host	Rabbit
Applications	WB,ELISA	Isotype	IgG

Note: Centrifuge before opening to ensure complete recovery of vial contents.

Images



Western Blot analysis of Human liver cancer tissue, hela cell and Mouse lung tissue using AGAP1 Polyclonal Antibody at dilution of 1:400

Immunogen Information

Immunogen	Synthetic peptide of human AGAP1
Gene Accession	NP_001032208
Swissprot	Q9UPQ3
Synonyms	GGAP1,AGAP-1,CENTG2,cnt-g2

Product Information

Calculated MW	94/89kDa
Buffer	PBS with 0.05% sodium azide and 50% glycerol, PH7.4
Purify	Affinity purification
Dilution	WB 1:500-1:2000

Background

This gene encodes a member of an ADP-ribosylation factor GTPase-activating protein family involved in membrane trafficking and cytoskeleton dynamics. This gene functions as a direct regulator of the adaptor-related protein complex 3 on endosomes. Multiple transcript variants encoding different isoforms have been found for this gene. GTPase-activating protein for ARF1 and, to a lesser extent, ARF5. Directly and specifically regulates the adapter protein 3 (AP-3)-dependent trafficking of proteins in the endosomal-lysosomal system.

For Research Use Only

Thank you for your recent purchase.

If you would like to learn more about antibodies, please visit www.elabscience.com.

**Focus on your research
 Service for life science**

Applications:WB-Western Blot IHC-Immunohistochemistry IF-Immunofluorescence IP-Immunoprecipitation FC-Flow cytometry ChIP-Chromatin Immunoprecipitation Reactivity: H-Human R-Rat M-Mouse Mk-Monkey Dg-Dog Ch-Chicken Hm-Hamster Rb-Rabbit Sh-Sheep Pg-Pig Z-Zebrafish X-Xenopus C-Cow.