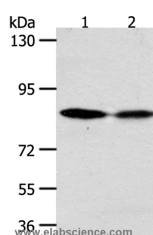


ADAM11 Polyclonal Antibody

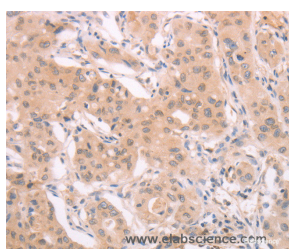
Catalog No.	E-AB-12942	Reactivity	H,M
Storage	Store at -20°C. Avoid freeze / thaw cycles.	Host	Rabbit
Applications	WB,IHC,ELISA	Isotype	IgG

Note: Centrifuge before opening to ensure complete recovery of vial contents.

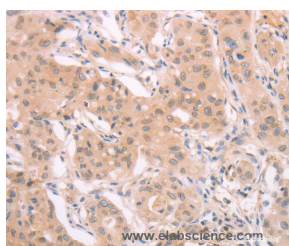
Images



Western Blot analysis of HeLa and SKOV3 cell using ADAM11 Polyclonal Antibody at dilution of 1:500



Immunohistochemistry of paraffin-embedded Human breast cancer using ADAM11 Polyclonal Antibody at dilution of 1:40



Immunohistochemistry of paraffin-embedded Human lung cancer using ADAM11 Polyclonal Antibody at dilution of 1:40

Immunogen Information

Immunogen	Synthetic peptide of human ADAM11
Gene Accession	NP_002381
Swissprot	O75078
Synonyms	MDC

Product Information

Calculated MW	83kDa
Buffer	PBS with 0.05% sodium azide and 50% glycerol, PH7.4
Purify	Affinity purification
Dilution	WB 1:200-1:1000, IHC 1:50-1:200

Background

This gene encodes a member of the ADAM (a disintegrin and metalloprotease) protein family. Members of this family are membrane-anchored proteins structurally related to snake venom disintegrins, and have been implicated in a variety of biological processes involving cell-cell and cell-matrix interactions, including fertilization, muscle development, and neurogenesis. This gene represents a candidate tumor suppressor gene for human breast cancer based on its location within a minimal region of chromosome 17q21 previously defined by tumor deletion mapping.

For Research Use Only

Thank you for your recent purchase.
 If you would like to learn more about antibodies, please visit www.elabscience.com.

**Focus on your research
 Service for life science**

Applications:WB-Western Blot IHC-Immunohistochemistry IF-Immunofluorescence IP-Immunoprecipitation FC-Flow cytometry ChIP-Chromatin Immunoprecipitation Reactivity: H-Human R-Rat M-Mouse Mk-Monkey Dg-Dog Ch-Chicken Hm-Hamster Rb-Rabbit Sh-Sheep Pg-Pig Z-Zebrafish X-Xenopus C-Cow.